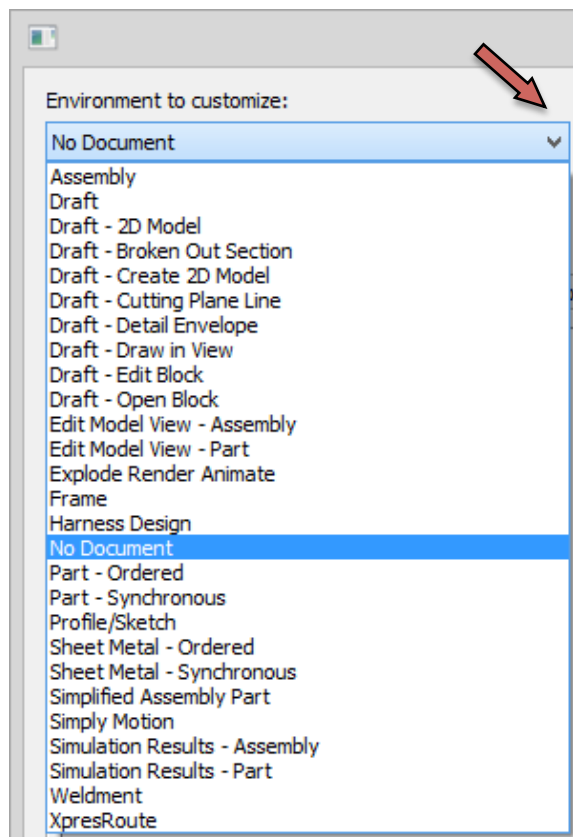
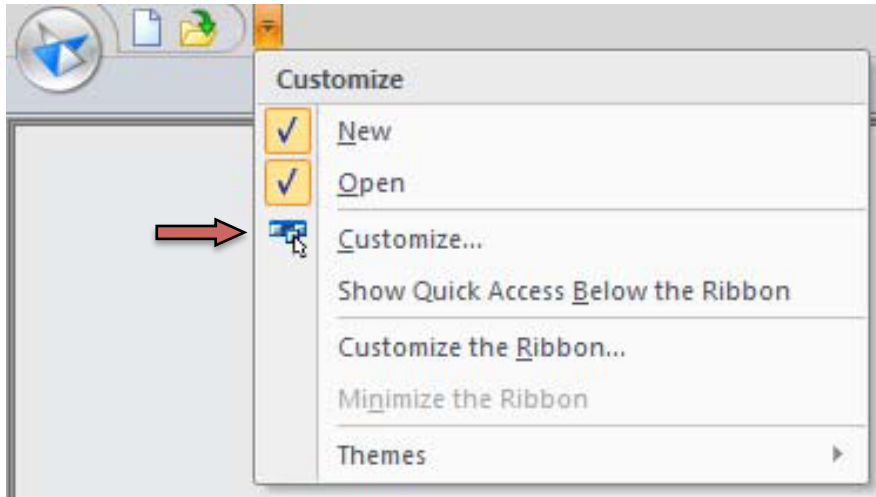


Tech Tip

Customising your Solid Edge Theme

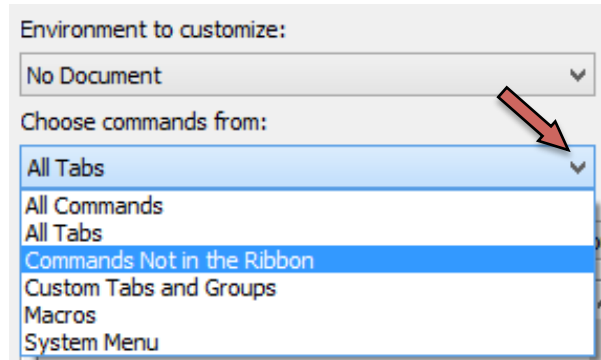
Customizing your Solid Edge Theme

To customize your Theme, you can start by clicking on the drop down button at the top left of your screen, just next to the Open button on the Start-up screen or any work environment. Choose **Customize...** to start.

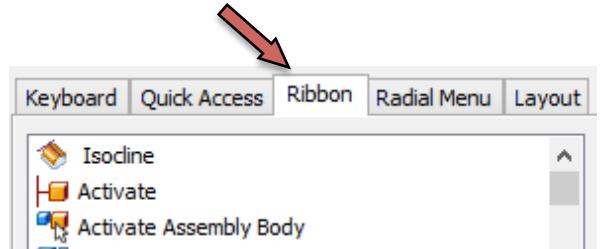


Be aware that each work environment will store its own customization. To choose the work environment you want to customize, simply click on **Environment to customize**.

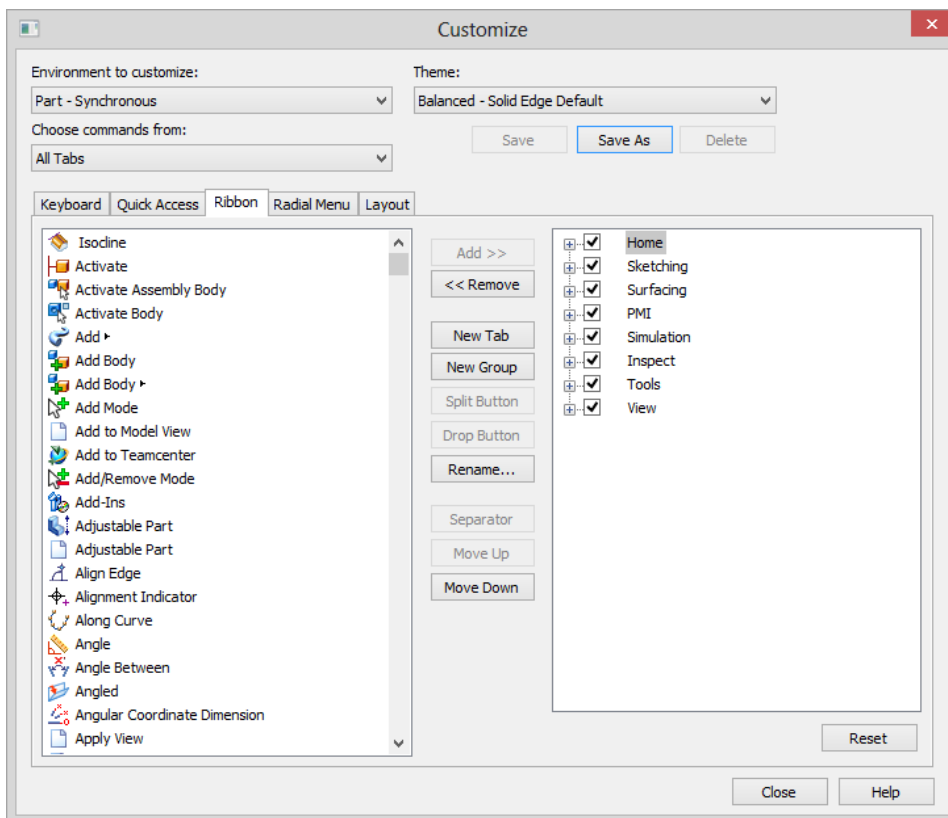
The second step is to click **Choose commands from:** to find the commands that you want add.



The Third Step is to define which area of your screen you are customizing:



Then, choose your tools from the left panel and use the **Add>>** button in the centre to move to the Right Panel under the tabs you select. Or the opposite to **<<Remove** from the right panel. You can also create new tabs or groups. After you finish your changes, click on **Save As** and give the name to this new Theme customization using the top right buttons.



This new Theme can be imported to other computers, or to your new installation in the future if you update your version.