

# Selecting parts in a Solid Edge assembly based on a custom property value

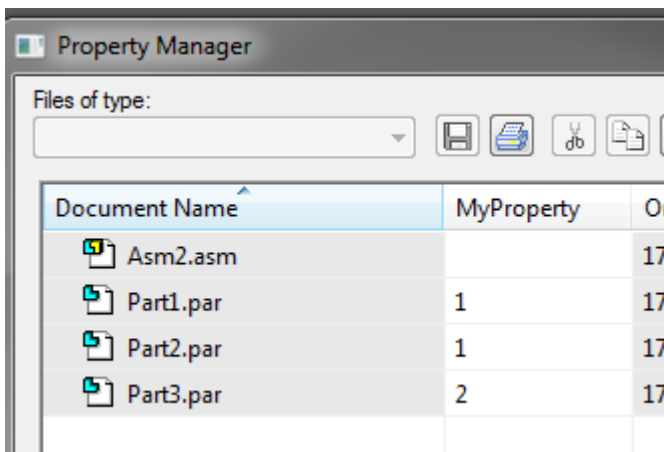
This tech tip will look at how to set up a search for parts in an assembly based on a custom property value

You can select parts in a Solid Edge assembly based on custom property value by using the "Select Tools" and creating a custom query.

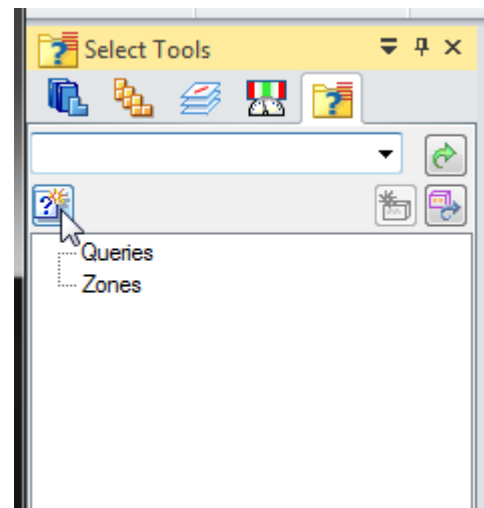
Using the following scenario in our assembly, we have the following parts all with a custom property "MyProperty":

We are going to select all the parts where the custom property "MyProperty" equals 1.

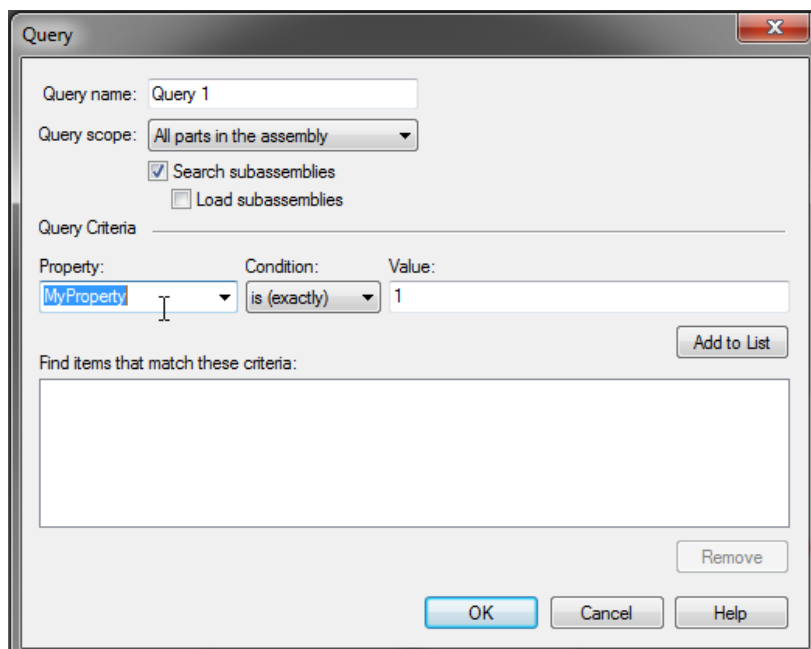
In the Select Tools tab create a new query:



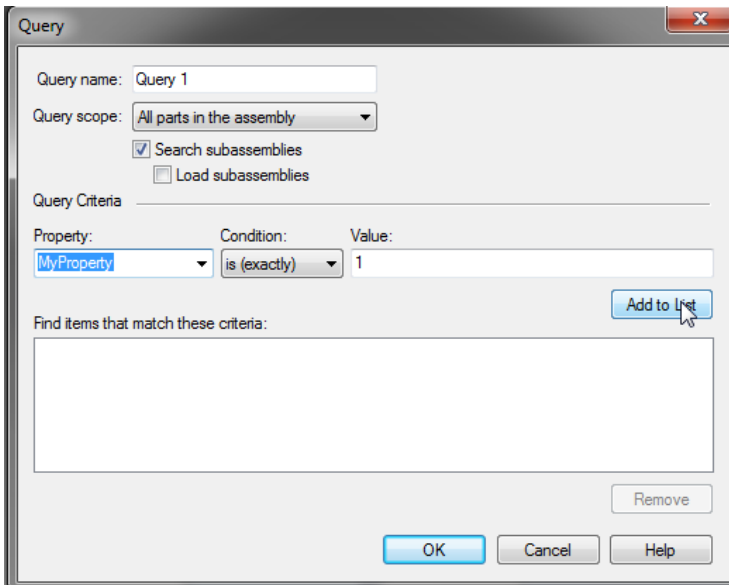
Document Name	MyProperty	Or
Asm2.asm		17
Part1.par	1	17
Part2.par	1	17
Part3.par	2	17



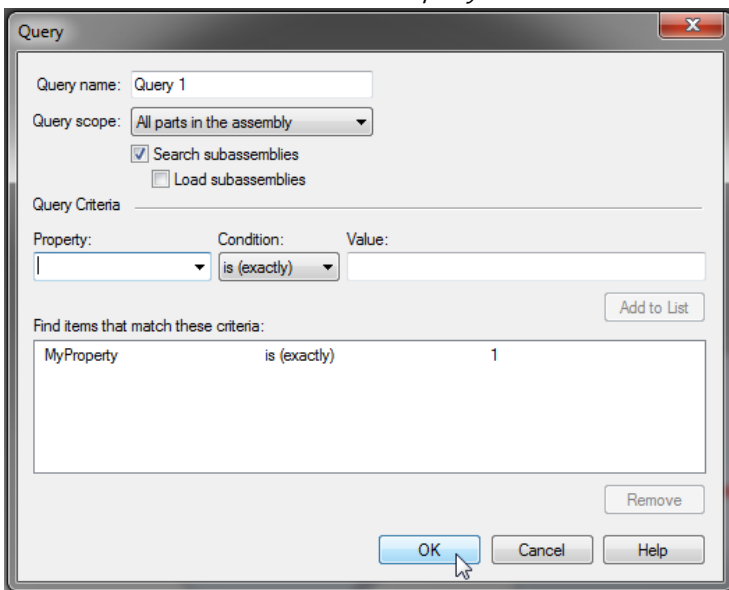
In the query dialog you must manually type the property name (it will not be selectable) and complete the rest of the parameters:



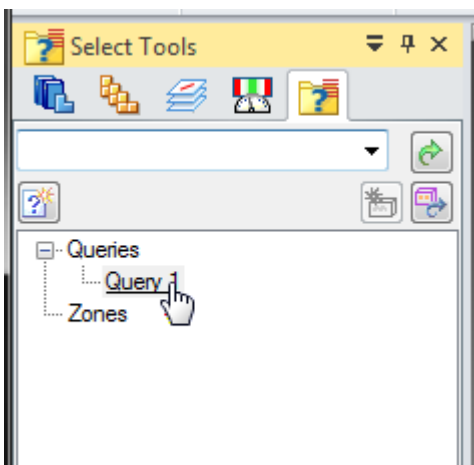
Then add to list:



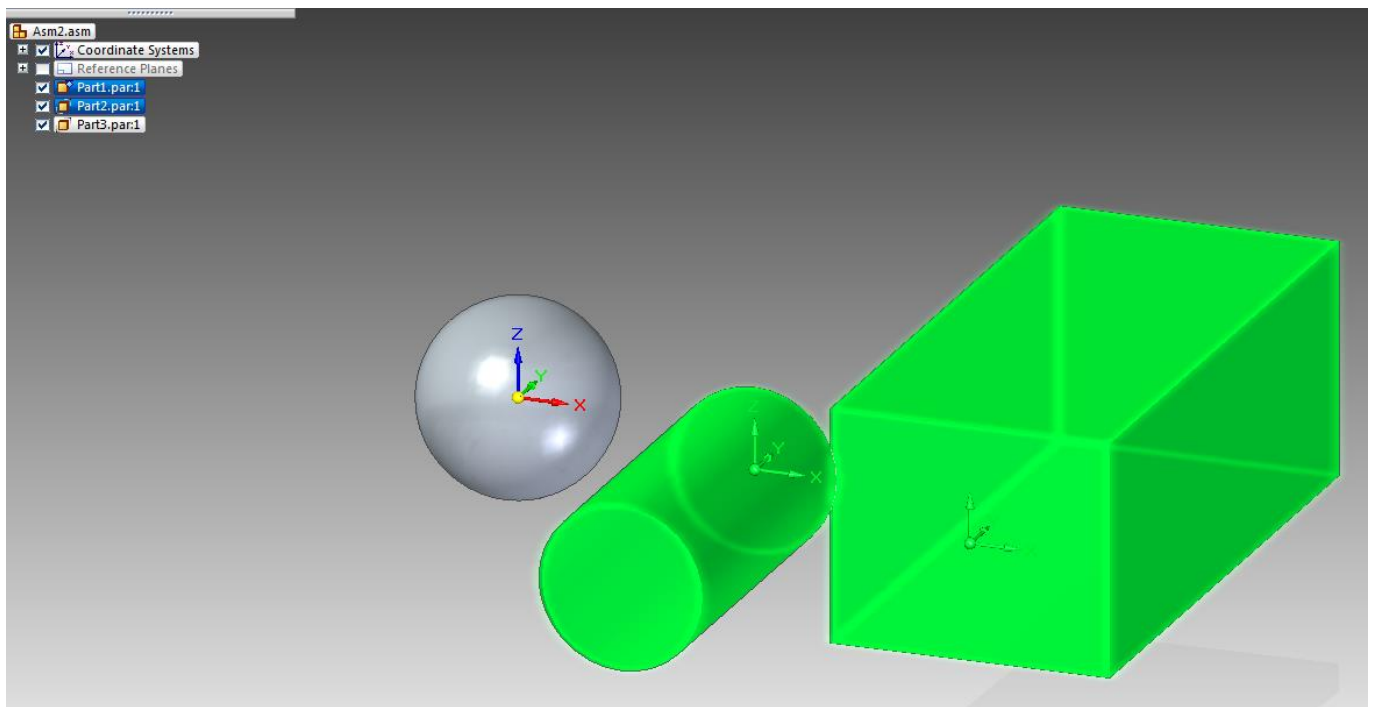
Select OK to create and save the query:



Then in the select tools tab double-click on the query to run it:



*The parts matching the defined values, in this case MyProperty = 1 are now selected:*



*Note that the query tool only works with text based properties.*

*For more on the select tools please see the Solid Edge help documentation:*

[http://docs.plm.automation.siemens.com/tdoc/se/108/help/#uid:index\\_assemble\\_parts:xid950491:xid287411:query1d](http://docs.plm.automation.siemens.com/tdoc/se/108/help/#uid:index_assemble_parts:xid950491:xid287411:query1d)