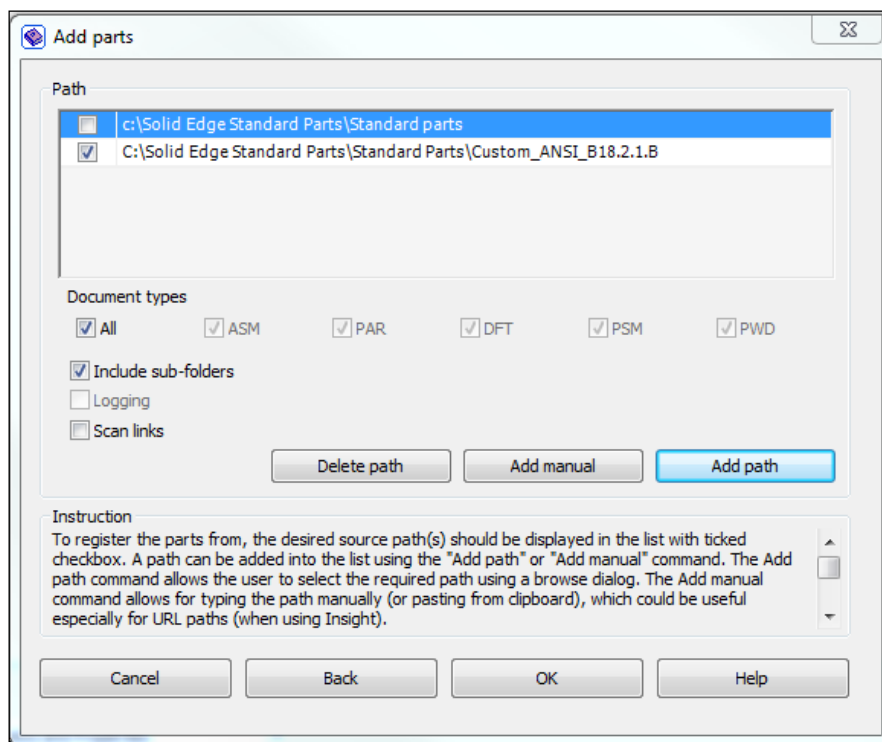


Adding Custom Fasteners to Solid Edge Standard Parts

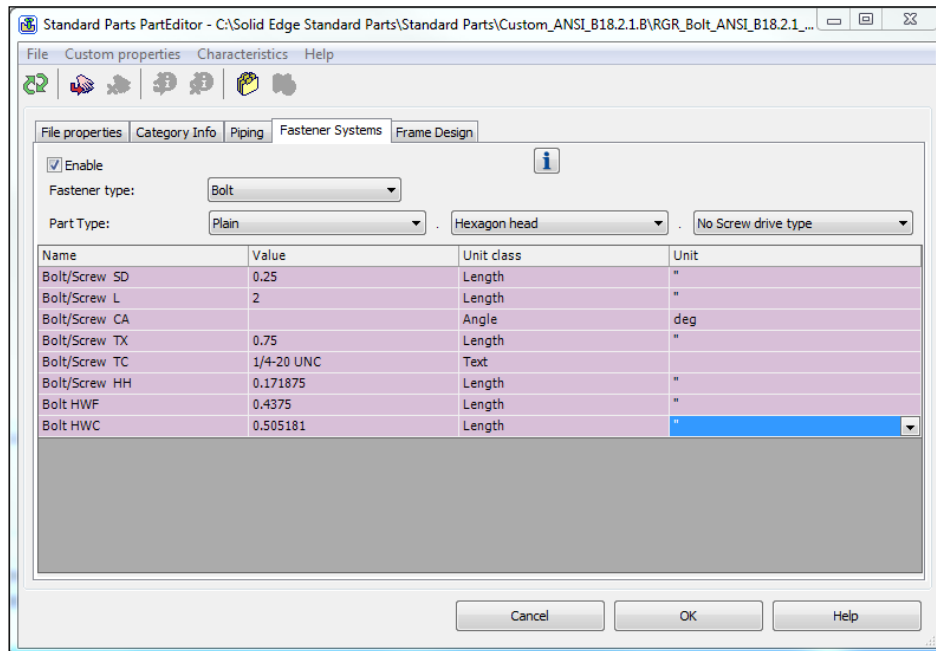
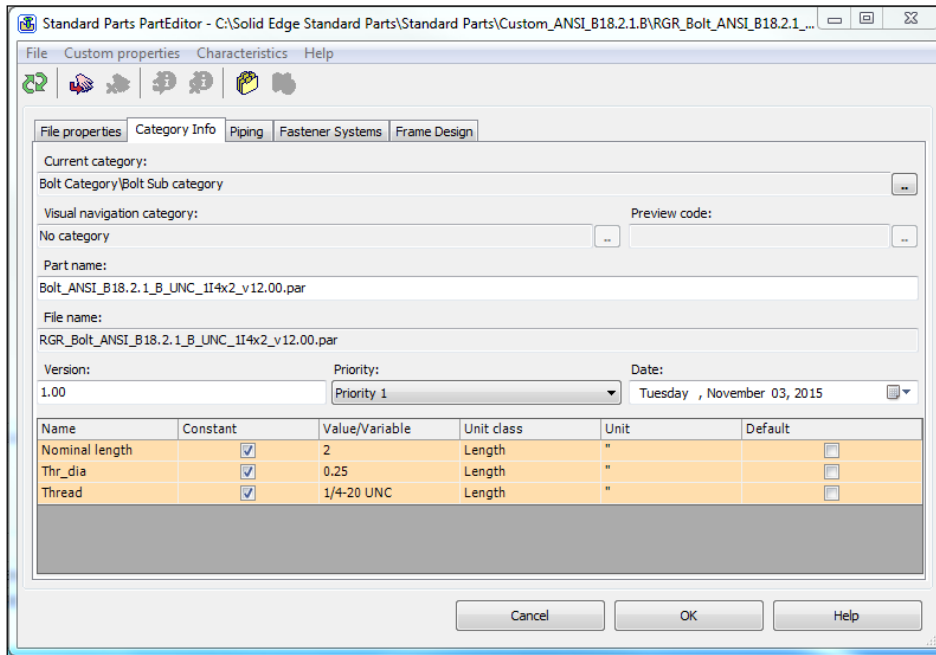
This Tech Tip is an example on how to add a custom fastener to the Solid Edge Standard Parts Library. In this example we will use a bolt, washer and a nut.

These steps assume that Solid Edge Standard Parts is installed in the default location:

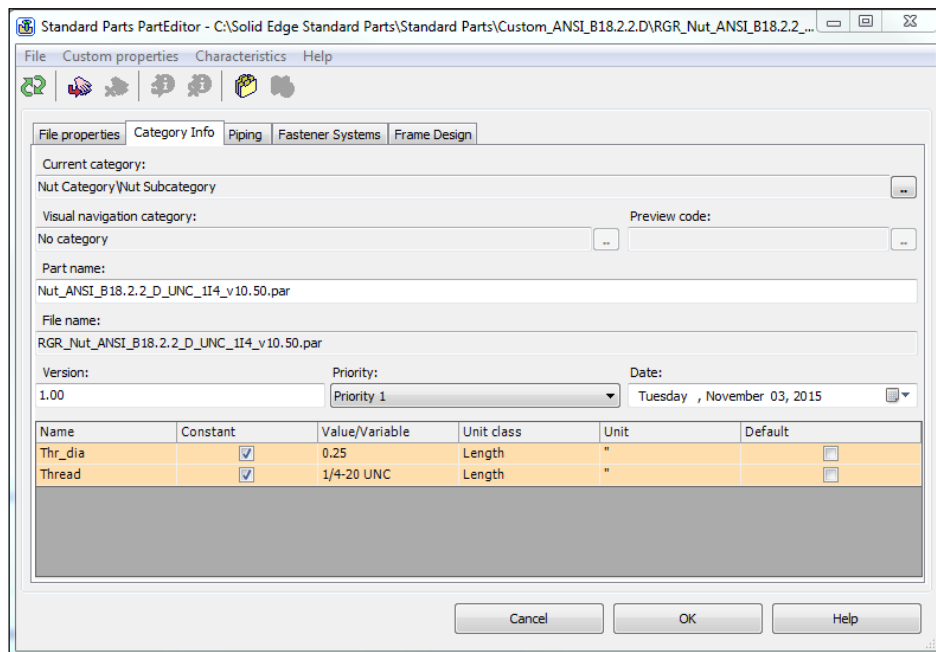
1. Place the custom parts in folders under the 'C:\Solid Edge Standard Parts\Standard Parts' (i.e. Custom_ANSI_B18.2.1.B for the custom bolt).
2. Ensure that the custom bolt, washer and nut have the required assembly relationships before they are added to the database. Use the Capture Fit command to store these relationships. Save the assembly when you do the Capture Fit.
3. Launch the Standard Parts Administrator. Click on 'Add Parts'. Select 'Add from existing multiple files.' Click on 'Add Path' to make the selection of the folder where the custom part is located and click on OK.

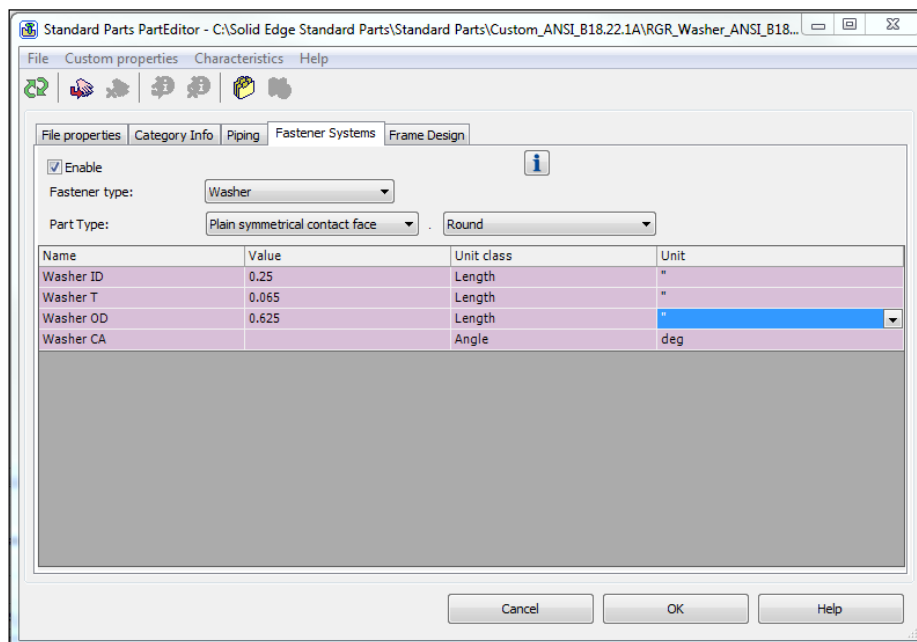
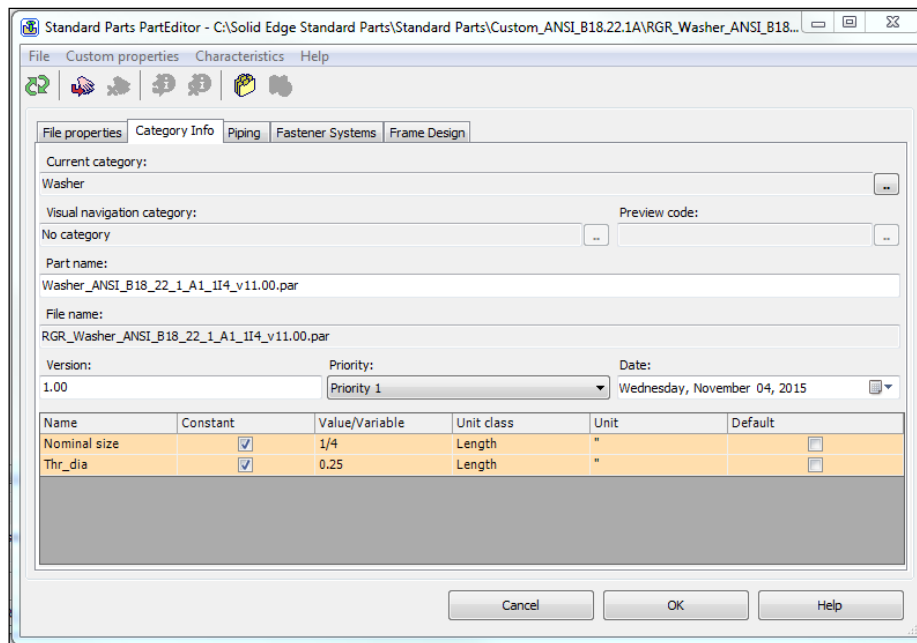
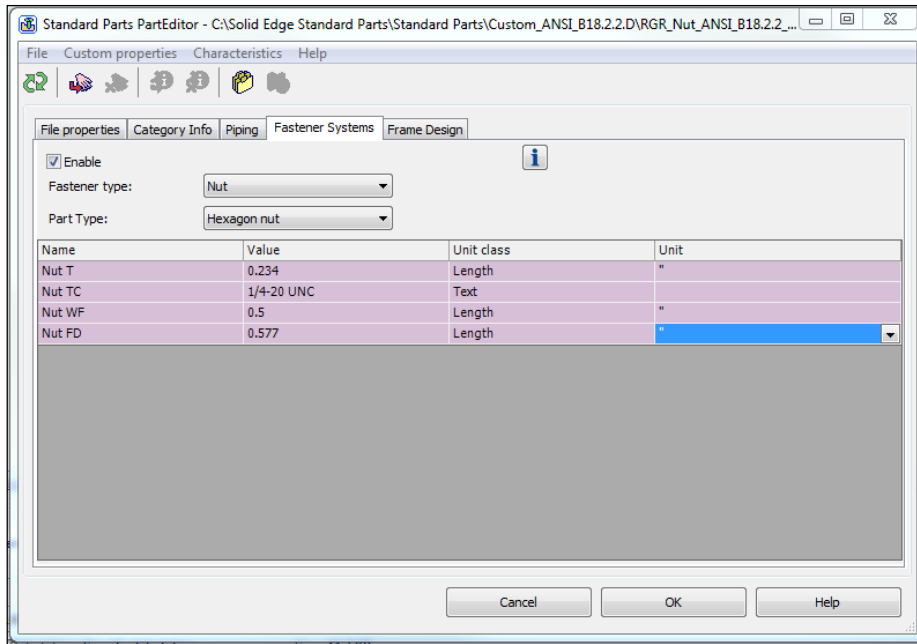


4. Create a category, characteristics, part name and fastener systems details. The image shown here comes from a copy of a bolt with all properties stripped.



5. Add the washer and nut in a similar manner.





6. Run the fastener System command.

