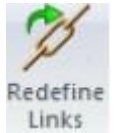


How to re-define links of Solid Edge parts in an assembly

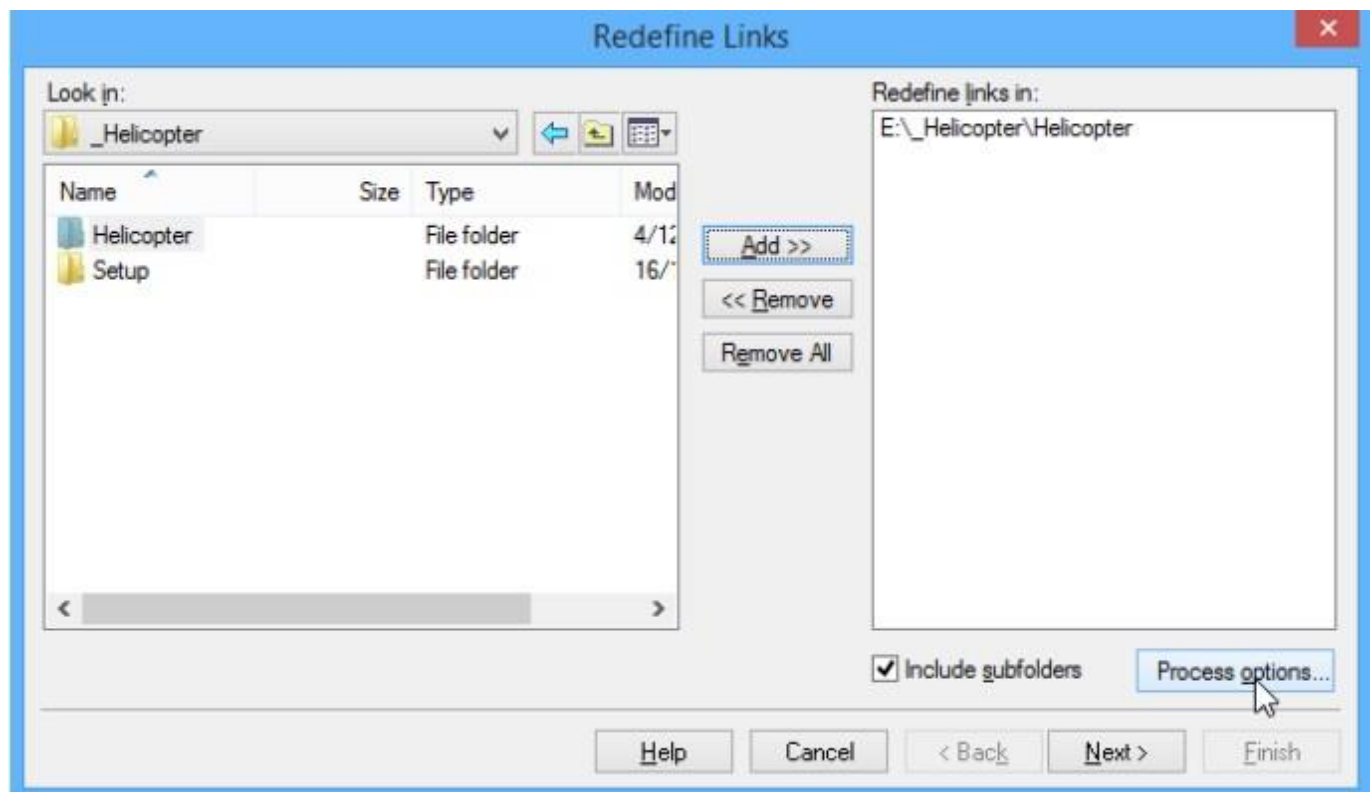
This Tech Tip will look at how to re-define broken links of parts within an assembly that have been moved from one network drive to another and the embedded links do not find the new location.

When you move documents from one location to another, sometimes the links to these documents break. The Redefine Links command, located on the Tools menu of Revision Manager, allows you to redefine the links of the selected set of files. The command does not actually copy or move files, but instead allows you to redefine links in assemblies after the files have already been moved.

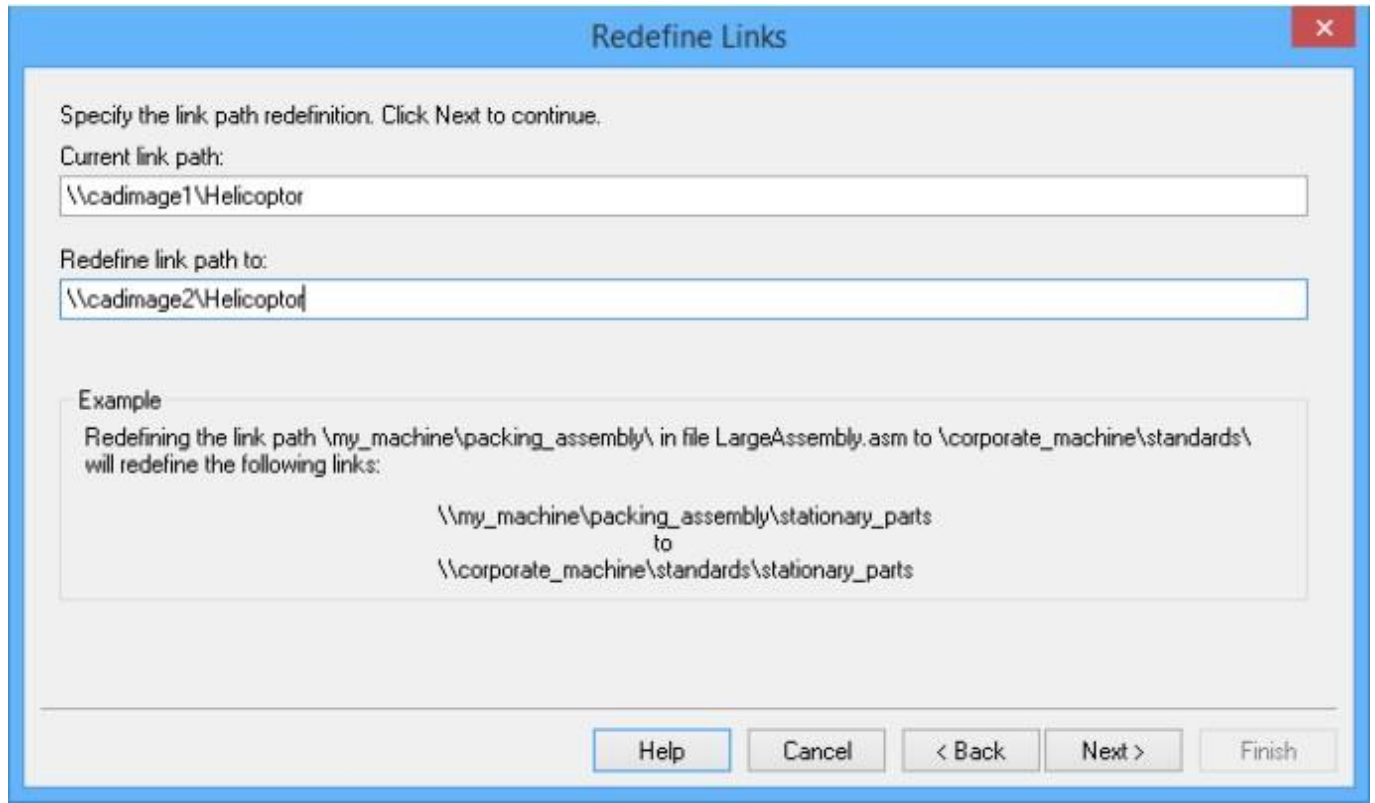


The Redefine Links command presents a series of dialog boxes that allow you to define information needed to redefine the links.

The first dialog box allows you to select the folders or documents containing the links that you want to define. You can choose from several filters to specify location and type of files you want to process. You can specify any type of Solid Edge file or you can choose to process files listed in an ASCII text file. When you have determined the location of the files, you can process a selected list of files, all files within a selected folder, or all files within a selected folder and any subfolders. Once you have selected the files you want to process, click the OK button to proceed to the next dialog box.



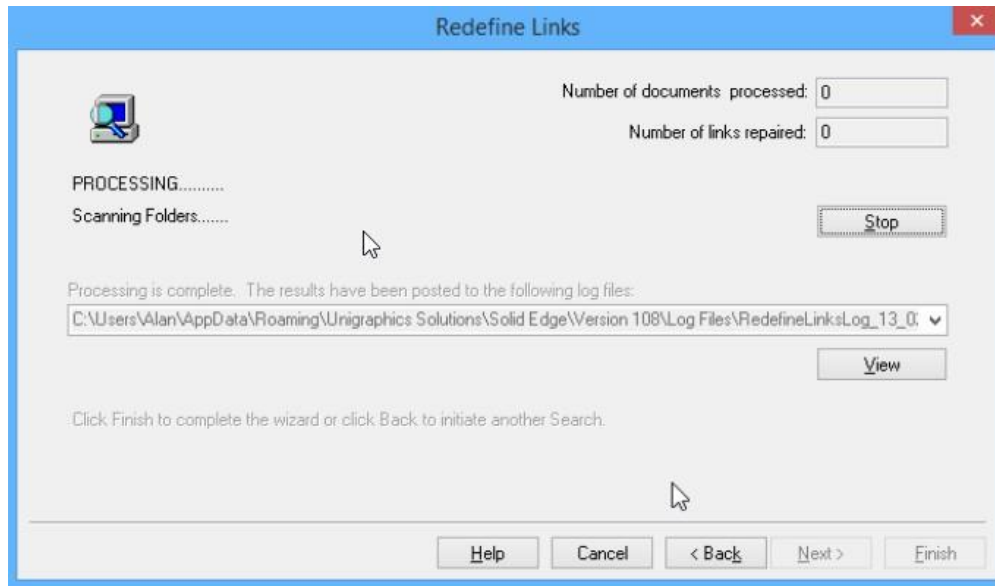
The second dialog box allows you to specify the link path redefinition. First you specify the current link path and then specify the path to which you want to redefine the link. The dialog box provides an example of these link path definitions. Once you have specified the link path, click the OK button to proceed to the next dialog box.



Note: Redefine Links only searches and replaces the first occurrence of the Current Link Path. It will not search the BOM tree and replace other occurrences that you may not be aware of.

The third dialog box confirms the information you entered in the previous dialog box. It lists the number of files you have selected and the path redefinition information. The dialog box also contains a very important option, Do not Save Files when Link Point to non-existent Files. If you do not select this option and attempt to process a link that points to a non-existent file, the system will open the parent assembly and save the redefine link path string in the parent assembly. An error is written to the log file stating that the non-existent files could not be found. If you select the option, the system does not open and save the redefined link path string in the parent assembly but does write an error message to the log file stating that the non-existent files could not be found. Once you have confirmed this information, click the OK button to proceed to the final dialog box.

The final dialog box tracks the processing of the selected files. It specifies the number of documents processed and the number of repaired links. You can click the stop button to stop the processing. You can also click the View button to view the ReDefLinksLog.txt file which contains information about the links you have redefined. Once you have completed redefining the links you can click the Finish button.



Redefine Links Log Files:

Two log files are created when you redefine links. These files are located in the same directory that contains the files being processed.

ReDefLinksLog.txt is an ASCII text file that contains information about the files being processed. It contains general information such as time, date, login name and nodename. It also contains a list of all results, both successful replacements and problems encountered.

ReDefLinksErr.txt contains the same information as ReDefLinksLog.txt except for the successful replacements. This is very useful when you are processing a large number of files, most of which are successful. You can check in the errors log to quickly see the files that need correcting. To view these files on Redefine Links step 3 of 4 dialog box, select the log file you want to view and click the View button.