

Femap 11.3 Features – Part 2

This Tech Tip looks some more of the new features and things to look out for in Femap 11.3.

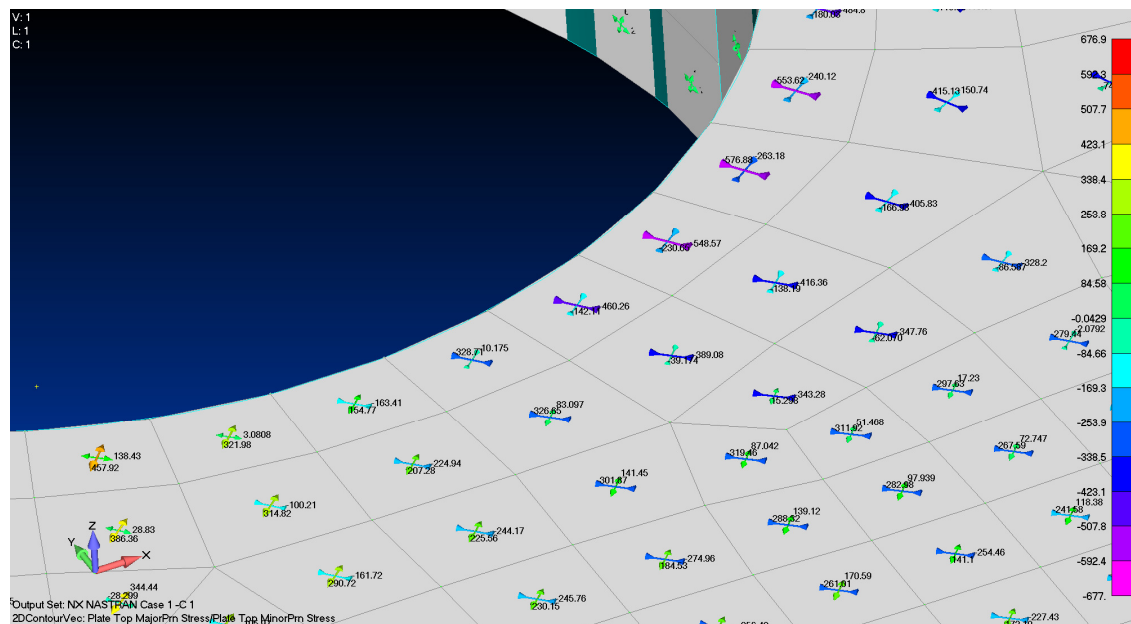
1. Tools | Toolbars | Draw/Erase



This provides a collection of quick-click tools to hide/erase geometry and/or analysis FE entities.

2. PostProcessing Toolbox -> Contour Arrow

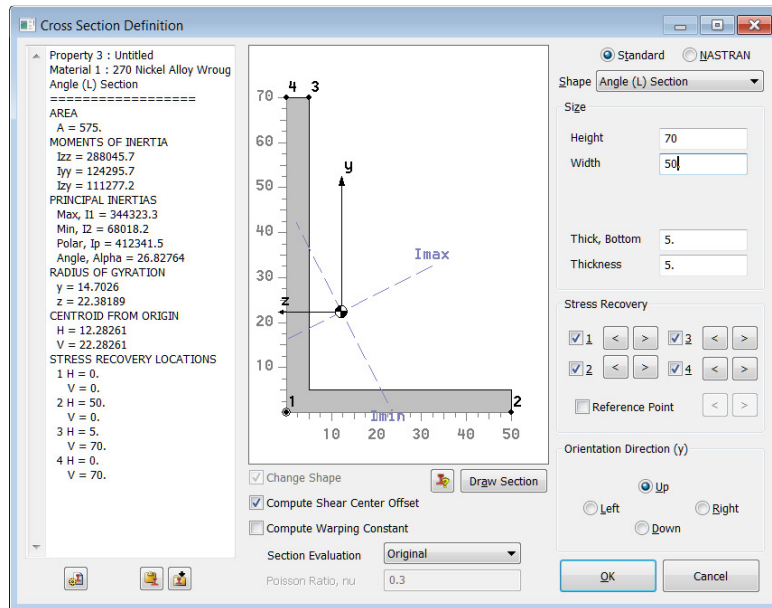
This provides a quicker way to display tensor plots of principal or coordinate directional stresses.



Contour arrow plot of Max and Min Principal Stresses.

3. New Property / Element type = Spring to Ground (single node element), with "other end" automatically, fixed in 6 DoF. Saves having to create short elements with a 2nd set of nodes which then need to be constrained.

4. Calculation / display of (principal) inertias and axes on beam Cross Section Definition



5. Meshing Toolbox -> Feature Removal -> Point. Allows curves which are broken (either intentionally or not) to have the redundant point removed without doing a general clean up on the solid.

6. Freebody display and listing now includes the option to include contributions from glue or contact interfaces.

7. Rationalised (via new menu) List | Output | Force Balance to simplify and clarify the options for listing Freebody data.

8. Can now apply "non-zero constraints". This is a little easier than applying enforced displacements, and then constraining the equivalent DoF at those enforced displacements.

9. Renumber All allows the ability to renumber multiple entity types in one go.

10. Added Group | Operations | Visible to create a group of whatever collection of entities is currently visible.

11. Added revision numbering to the Output Set title when the same analysis set is run more than once: File | Preferences -> Results -> Track Revision