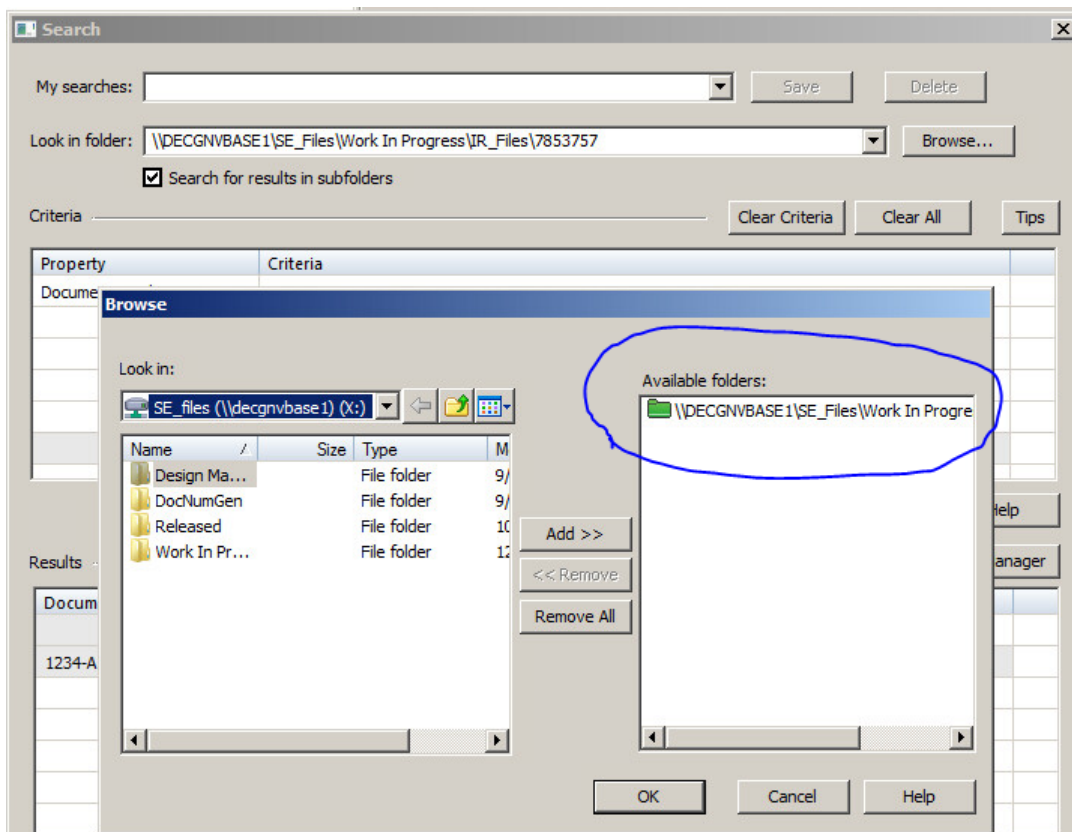


Troubleshooting built-in Data Management where used (Solid Edge fast search)

This Tech Tip shows the steps to check if Solid Edge properties are exposed to Windows indexing or not. This also explains if files are indexed correctly or not.

Are my files Indexed?

If you start a search in Solid Edge and browse to the file location, the available folder icon can be green or red. The green colored folders are included in the Windows Index



How to configure the Solid Edge Fast Search is not part of this document, information how to set up can be found in the Solid Edge help files.

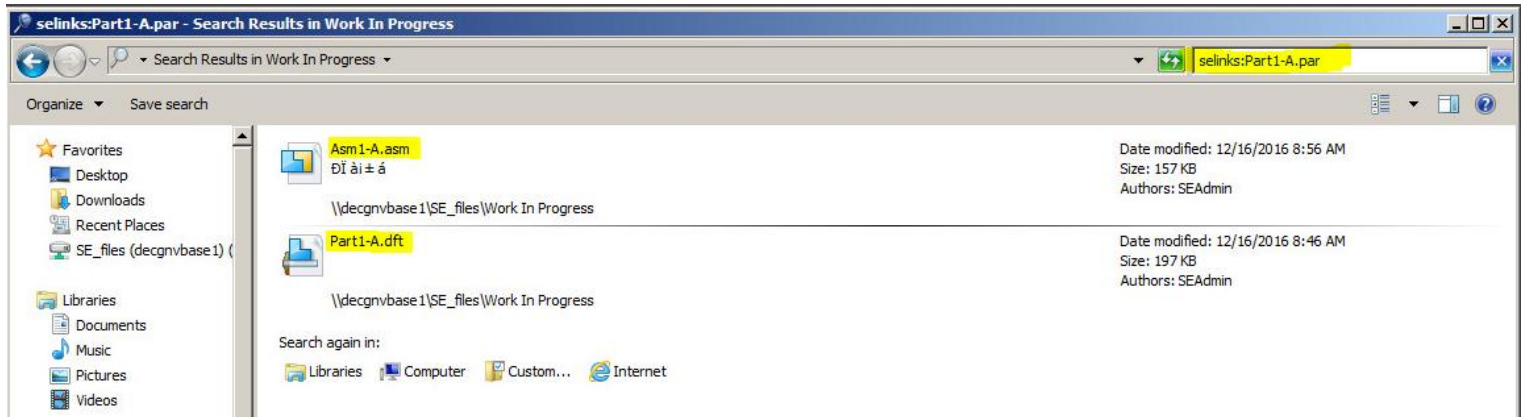
How does Solid Edge Where Used find files?

In my example the `\\decgnvbase1\SE_files\Work in Progress` directory is added to index and Part1-A .par is used in Part1-A.dft and Asm1-A.asm.

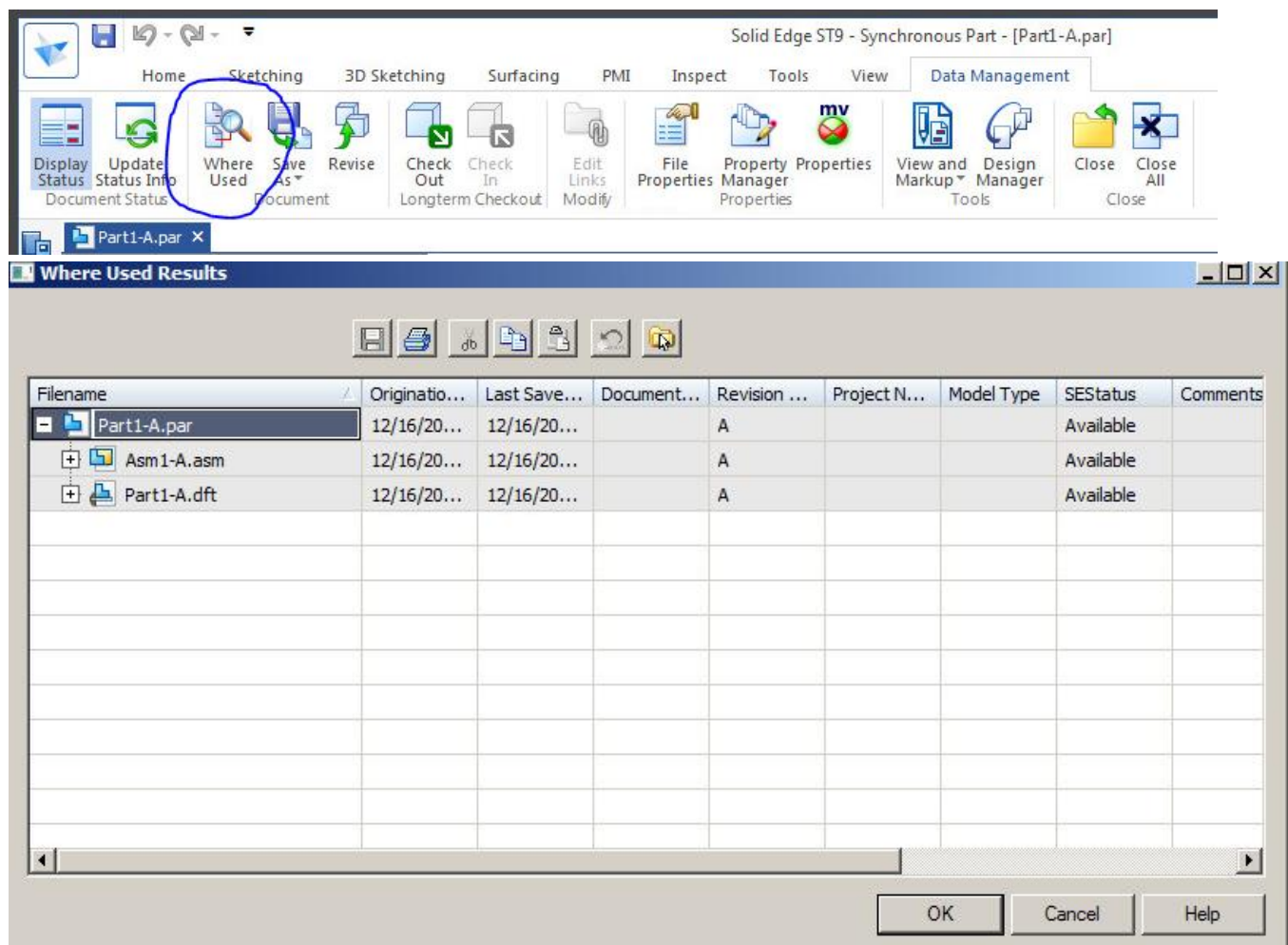
Current Filename	Current Location
Asm1-A.asm	\\DECGNVBASE1\SE_Files\Work In Progress
Part1-A.par	\\DECGNVBASE1\SE_Files\Work In Progress
Part1-A.dft	\\DECGNVBASE1\SE_Files\Work In Progress

Solid Edge installation will deliver a set of properties to Windows Explorer that are used to search.

- Open Windows Explorer for location where the Solid Edge part files are present.
- Go to windows search explorer and add **selinks:Part1-A .par** à **here selinks is the SE property for Where Used which is exposed to windows indexing.**
- We should see results as files where Part1-A.par is used.



- Solid Edge Where Used (Data Management) will perform the same action to deliver this result.



Troubleshooting

If Where Used does not find the related files there is a simple check to perform.

1 – Run Duplicate File Report

We deliver a small tool to see if your Windows Indexing is using the exposed Solid Edge properties. Run the "C:\Program Files\Solid Edge ST9\Program\DupFileReport.exe" and review the output.

Default output can be found in the "My Documents\SE_DupFileReport" folder.

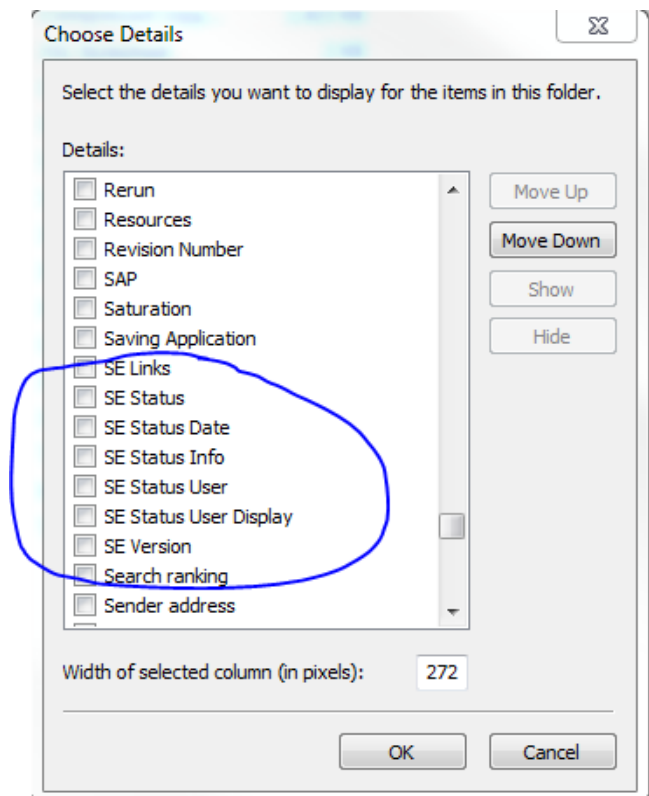
This tool will log basic errors such as...

- SE properties are not exposed to windows indexer
- Windows search service is Off
- No SE data indexed etc.

Note: Run this tool on the machine where Solid Edge Fast Search is configured. This tool is delivered with Solid Edge and Solid Edge Fast Search e.g. if your files are on a shared drive (server) you have to run this tool on the server.

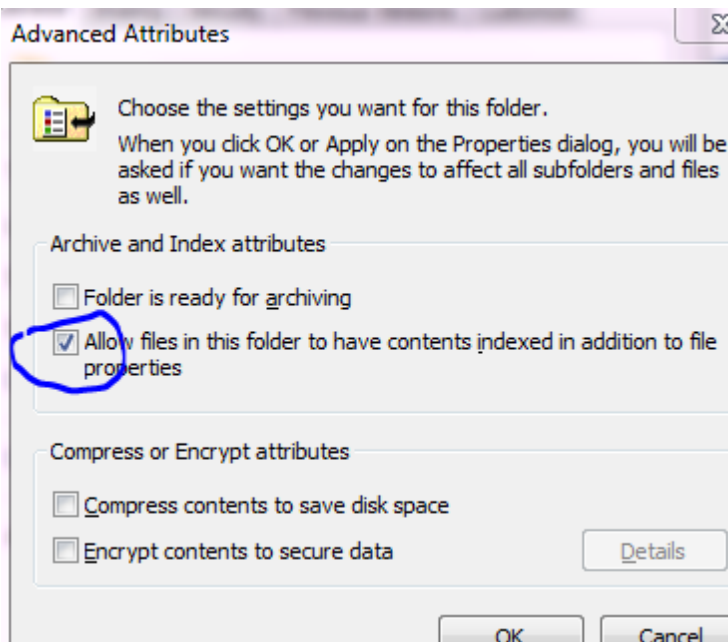
2 - You don't have the SE* properties in Windows Explorer

If this is the case Where Used will not find any related draft or document.



=====

- Close all Solid Edge applications (if running).
 - Register SEPropertyHandler.dll
 - o Open cmd prompt with administrator rights
 - o Go to path of SE Program directory
- ```
$ cd C:\Program Files\Solid Edge ST9\Program
```
- o register the dll
- ```
$ regsvr32 SEPropertyHandler.dll
```
- o This brings message "*DllRegisterServer in SEPropertyHandler.dll succeeded.*"
- Open the folder (**Right Click** -> **Properties** -> **Advanced**) that will be added to index. This check mark needs to be checked



- Rebuild the indexes from indexing options dialog ('*Advance Options*' dialog)
 - Perform Where Used test cases again.
- =====