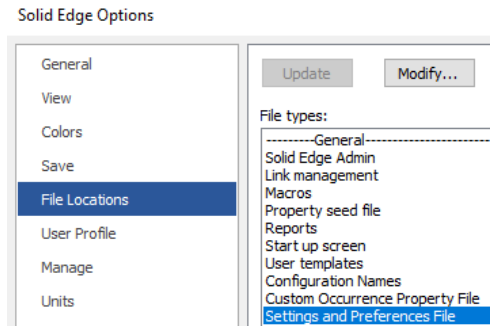


Saving your settings and preferences

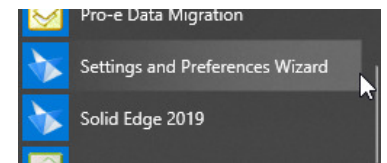
This Tech Tip looks at how to configure Solid Edge to save your settings and preferences.

Most likely, you will come across situations where you make a change to a preference or setting and then come back a day later and it has changed back to its' original value. The reason behind this is that you need to set up a file to store all of these settings in.

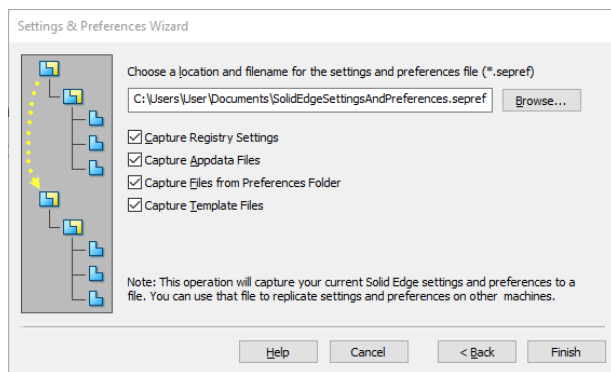
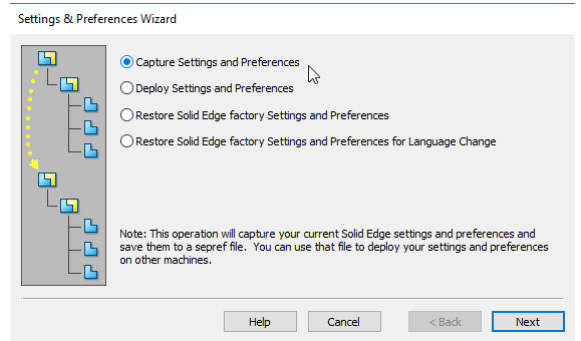
To check whether this has been set, open you Solid Edge Options, click on File Locations and see whether the "Settings and Preferences File" has a value assigned to it? If not, any changes you make to your preferences or settings will have no place to be stored.



Unless someone else has created a file to be shared, you will need to create a new file. The first step is to close Solid Edge and open the "Settings and Preferences Wizard" from the Windows Start menu, in the Solid Edge 2019 folder.



On the first page of the dialog box, choose the first option "Capture Settings and Preferences", as this will create the preferences file to store your setting in to. Click the "Next" button to move on to the next stage.



If you are setting up a site wide file, change the location to a network address, or you can just use the default local folder. Check the options that you would like to have captured and click the "Finish" button to create the file.

If you are working on a local settings file and want to continually save the current set of settings and preferences when you close Solid Edge, you will need to set one more item. Open Solid Edge and go into the Solid Edge options. Click on the User Profile tab and check "Capture Settings and Preferences during exit of Solid Edge".

