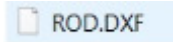


Giving DXF/DWG a Solid Edge Draft Association

This Tech Tip looks at how you can force DXF and DWG files to open into Solid Edge Draft.

Occasionally, you may be sent or work with dxf or dwg files and to open them, you will need to first open Solid Edge, change the file type and then find and click the file to open. But how do you manage if you want to open the file directly from Windows Explorer. As a default (unless you also have Autocad loaded), there will be no default application associated with these file type. You can assign Solid Edge as the application to open it with, but this will open Solid Edge and then, as it doesn't know what template to open the file with, will just drop back to a file open and you will then need to locate the file as before.



There is, however, a way of ensuring that Solid Edge will open, prompt for a template and then open the file. This is achieved by editing the registry, as follows. Create a text file with the contents below, name it SE_DXF.reg and run it by double clicking on it.

```
Windows Registry Editor Version 5.00
```

```
[HKEY_CURRENT_USER\Software\Classes\.dxf]
```

```
@="SolidEdge.DraftDocument"
```

```
[HKEY_CURRENT_USER\Software\Microsoft\Windows\CurrentVersion\Explorer\FileExts\.dxf]
```

```
[HKEY_CURRENT_USER\Software\Microsoft\Windows\CurrentVersion\Explorer\FileExts\.dxf\OpenWithList]
```

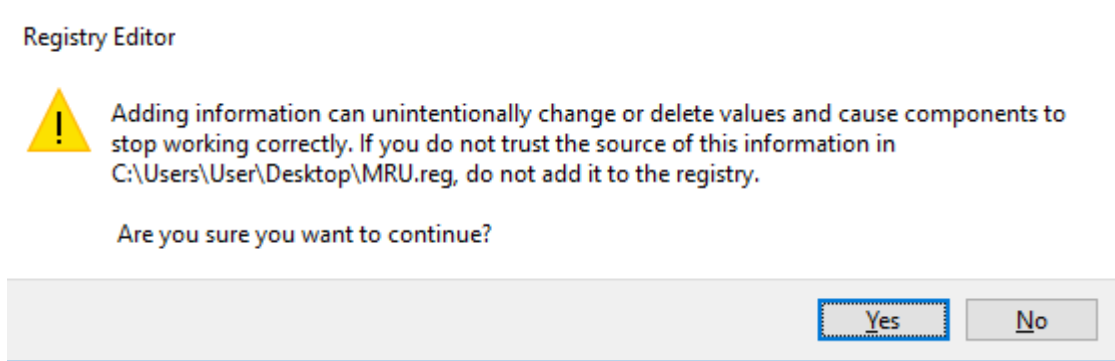
```
"a"="Edge.exe"
```

```
"MRUList"="a"
```

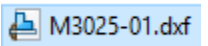
```
[HKEY_CURRENT_USER\Software\Microsoft\Windows\CurrentVersion\Explorer\FileExts\.dxf\OpenWithProgids]
```

```
"SolidEdge.DraftDocument"=hex(0):
```

When you run the registry file, you will see the following message:

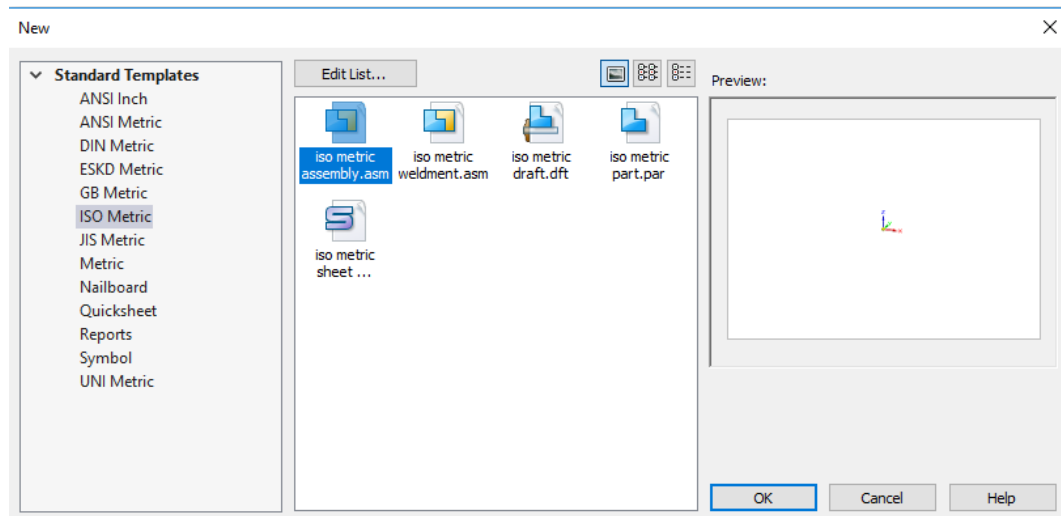


Click Yes and you will receive a message that the registry has been changed.

Once you have re-started your computer, you will see that dxf files will now be displayed as a solid edge draft file. 

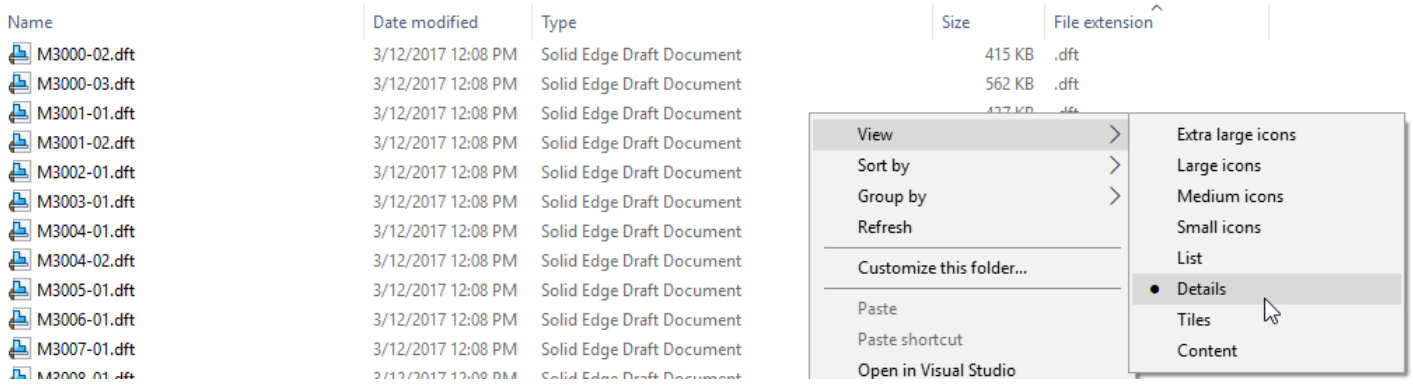
If you want to do the same for dwg files, edit the .reg file and replace "dxf" with "dwg" and re-run it.

Now, when you double click the dxf or dwg file, Solid Edge will open and prompt you for a template. Select The draft file of your choice and the file will then be opened.

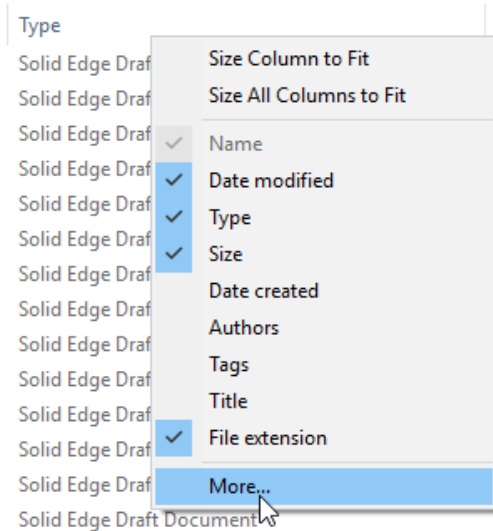


As all dft, dxf and dwg files are now listed as Solid Edge Draft files, they will no longer be listed separately in windows explorer if you sort by file type. To overcome this, use the File Extension as the item to sort on. Set this up as follows:

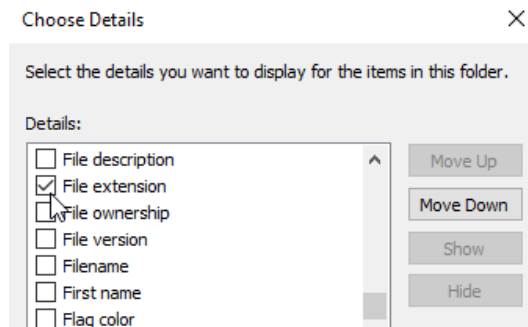
Open Explorer and change view style to details so that you can see column headings:



Then right click on one of the headings and select More



Scroll down the list to "File Extension", click it and click OK



You can the sort by file extension:

