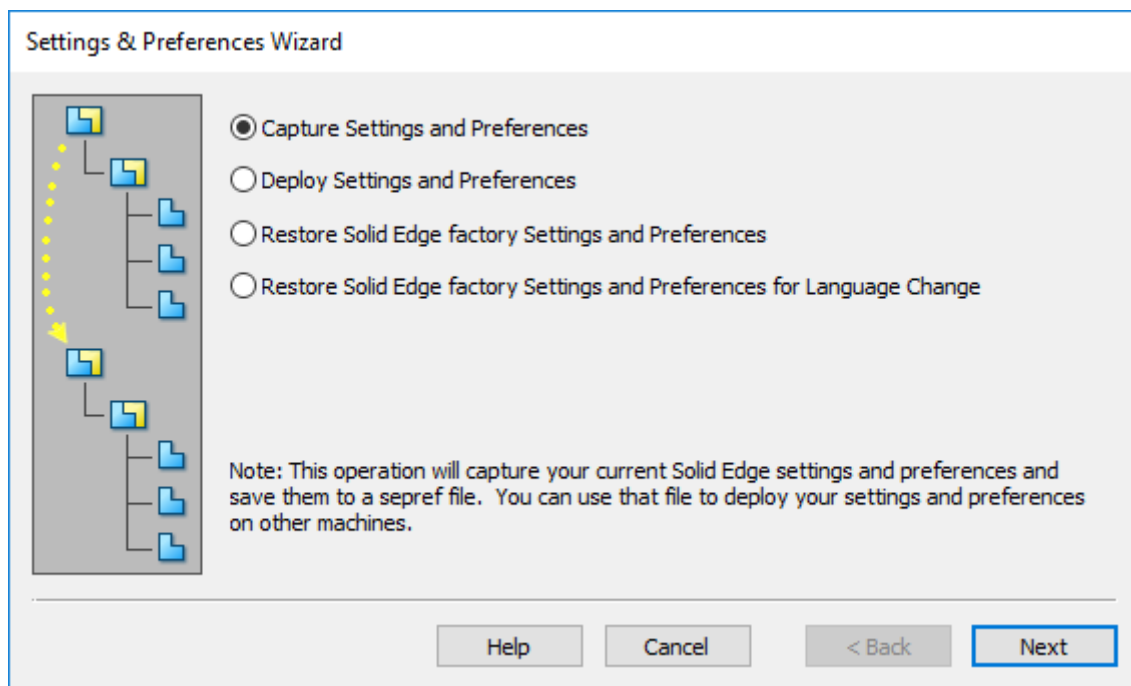


Transferring Settings between versions

This Tech Tip looks at how to copy all of your settings and customisations between one version and another.

In the use of Solid Edge, users will quite often make changes to their interface, like changing the quick access toolbar, changing the ribbon or the radial menu. To ensure that these are copied from one version to the next.

Before uninstalling, go to the Start Menu and open the Settings and Preferences Wizard from the Solid Edge group. Choose "Capture Settings and Preferences"



Solid Edge can capture into an encrypted file the following types of settings:

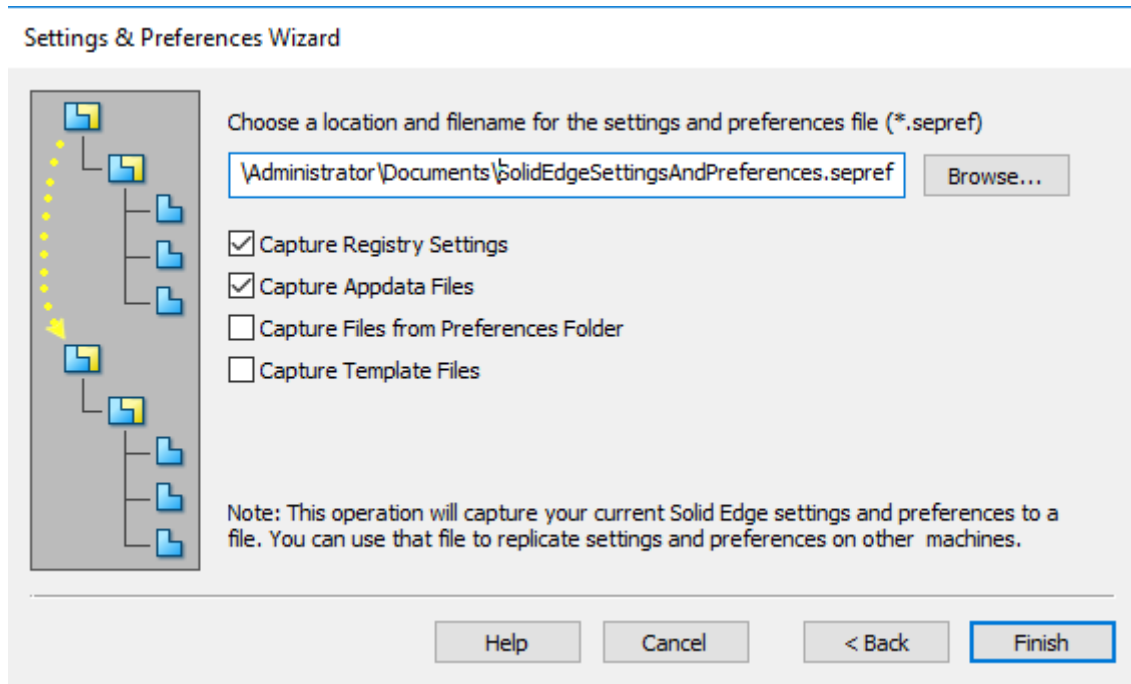
Registry settings—Stores many of the user preferences and customizations.

Files from the AppData folder—Stores customized themes.

Files from the Preferences folder—Often stored on a server, accessed by multiple users.

Template files—Often stored on a server, accessed by multiple users.

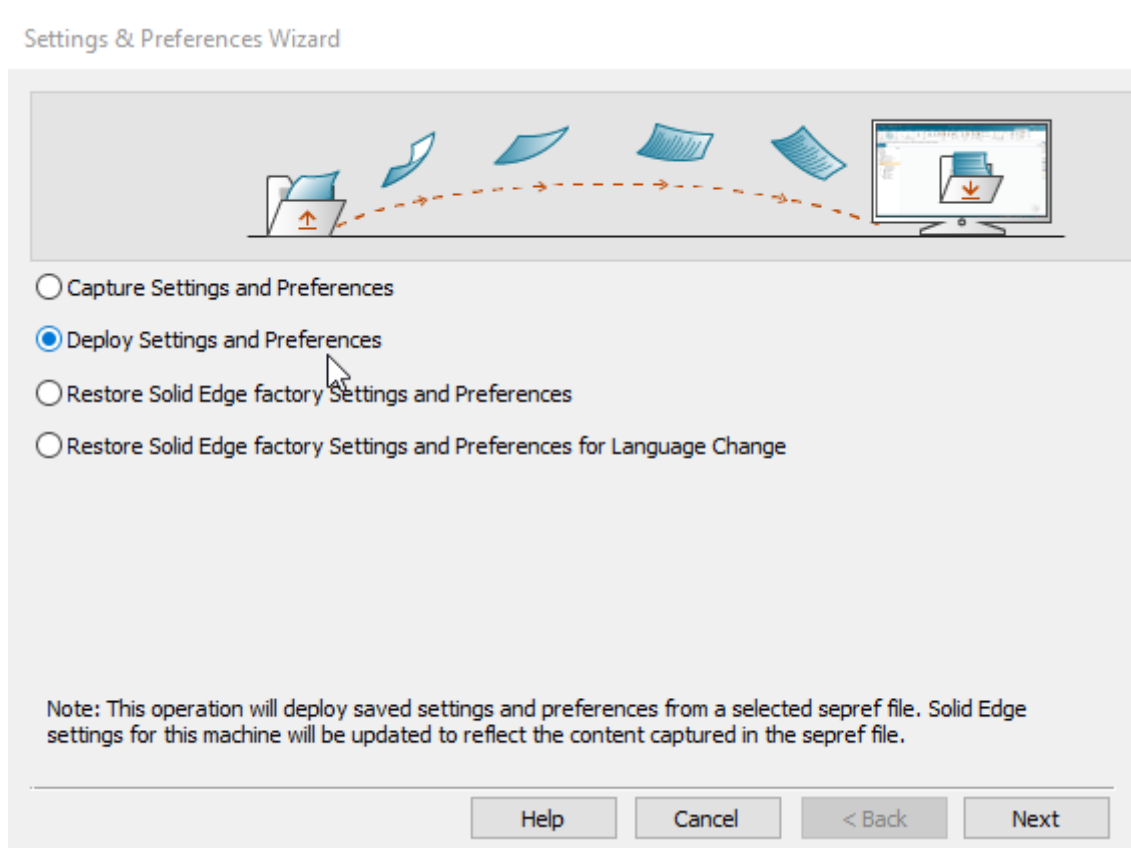
By default, the system stores the file, SolidEdgeSettingsAndPreferences_<username>_SE<version>.sepref, in the My Documents folder.



Depending on the scope of your customization effort, you can use the following tools and methods:


Now you can uninstall the old version and install the new one.

To deploy saved settings and preferences run the Settings and Preferences Wizard and choose the second option – “Deploy Settings and Preferences”



Locate the file that was saved from the old version and specify that as the one to restore. Specify which options you want to import back in.

Settings & Preferences Wizard



Choose a location and filename for the settings and preferences file (*.sepref)

C:\Users\alan\OneDrive\Documents\SolidEdgeSettingsAndPreferences_alan_SE224.sepref Browse...

The settings and preference file can be used with Solid Edge 2024 and higher versions.

- Deploy Registry Settings
- Deploy Appdata Files
- Deploy Files to Preferences Folder
- Deploy Template Files
- Create a backup of the current settings for alan
 - Backup file will be saved in the same folder from where the settings and preferences file taken for deploy settings.

Note: This operation will deploy your saved settings and preferences and apply those settings to Solid Edge on the current machine.

Help Cancel < Back Finish