



- ✓ Extremely easy to use
- ✓ Highest flexible
- ✓ Quickly introduced

The open, high-performance solution for managing product data

FOCUS ON YOUR BUSINESS

www.pdm-studio.tech/en

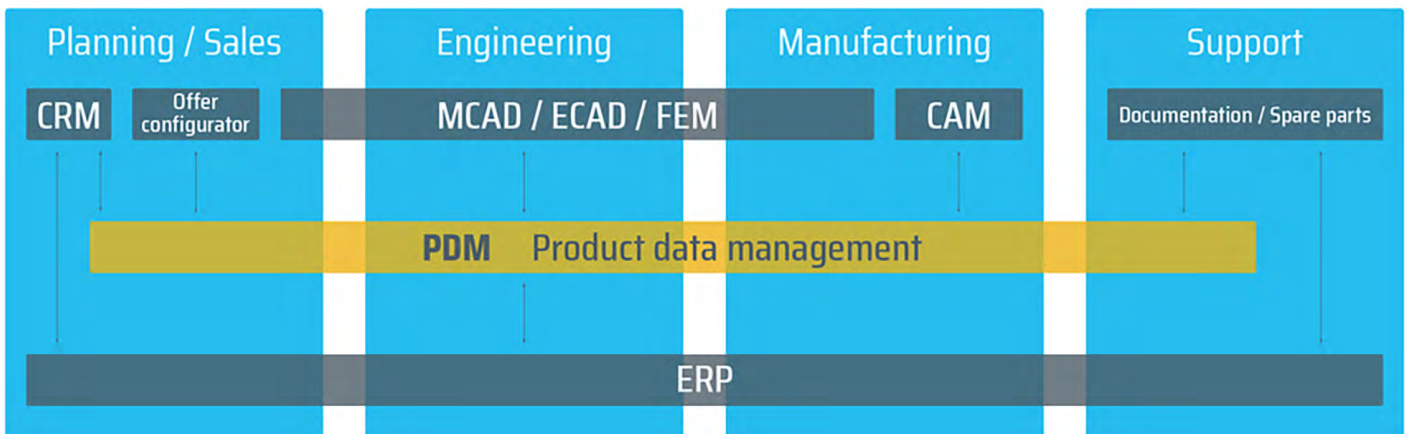
Company profile

PDM Studio is a solution developed by CAD Partner GmbH

PDM Studio was developed in 2014 as a successor product to a product data management solution that had been in existence since 2001. Therefore, PDM Studio combines extensive hands-on experience with the use of state-of-the-art technologies and features. CAD Partner GmbH was founded in 1989 and has continuously established itself as a competent software development house in the field of mechanical and plant engineering ever since. The extensive

experience of our employees, together with professional consulting and sales, guarantee comprehensive, needs-oriented support – from standard solutions through to customer-specific, complete CAD and PDM solutions.

Our competent user support includes complete technical service: development, software implementation, training, and assistance.

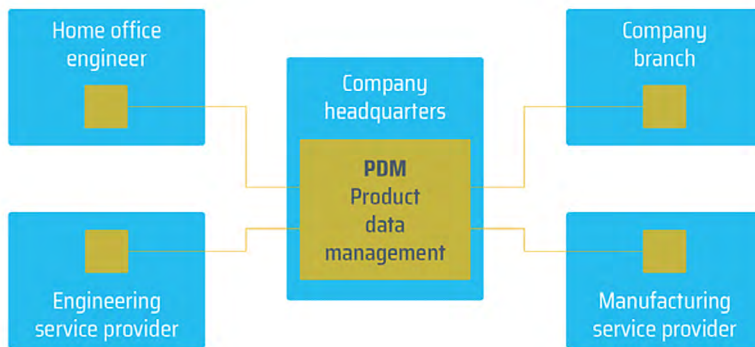


PDM Studio is the solution for managing product data: Extremely easy to use, highest flexible and quickly introduced

The software offers extremely high flexibility and performance without overwhelming the user. Benefit from significantly more efficiency and quality in the entire product development process.

It can also be used to configure and fully automate recurring routine workflows such as sheet metal processing. This not only reduces manual work, but also prevents inconsistent data and the resulting product rejects, as well as many other problems.

BENEFITS FOR IT



BENEFITS FOR THE USER

- Quick identification of the life cycle phase of a component (e.g., in progress, production release, old part)
- User-friendly overall overview on the basis of where-used list and project structure
- Significant reduction of manual work due to automation of routine tasks, such as generating BOMs or derivation of neutral formats
- Easy way of finding similar, already designed components
- Significant increase in performance (factor 5-10), especially for large assemblies

- Efficient work across corporate locations, e.g., in the home office or when collaborating with service providers
- Low network load due to smart data synchronisation
- Installation on local server or in the (private) cloud
- Easy, individual and fast integration even into existing infrastructures
- Supports Microsoft Office, Windows Server, Solid Edge, SOLIDWORKS, NX, AUTOCAD, Inventor and many more
- Connection to more than 130 applications and data sources (e.g., CRM, ERP) possible
- Access control to information and features through central user management
- Fast implementation, minimum personnel and maintenance requirements
- High level of acceptance by users due to user-friendly operation
- Full 64bit support

BENEFITS FOR THE COMPANY'S MANAGEMENT

- Must-have tool for batch size 1 production due to high degree of automation
- Short time-to-market as a result of efficient processes
- Fulfilment of demanding project specifications by means of seamless documentation
- Minimisation of non-value added activities

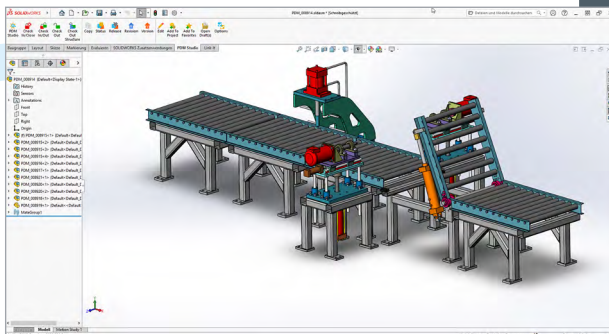
Standard features

Extensive basic package

The standard features of PDM Studio

PDM Studio is a software solution from practice for practice. The standard version offers you a wide range of functional modules which you can use to manage your data any time, anywhere.

All features are constantly being further developed in cooperation with users, and additional modules are added on a regular basis.



PDM Studio with SOLIDWORKS



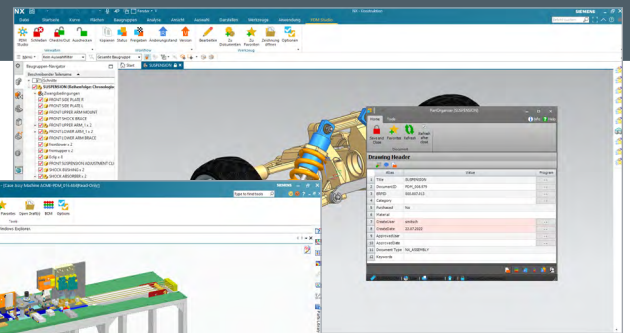
PDM Studio with Inventor

Multi-CAD

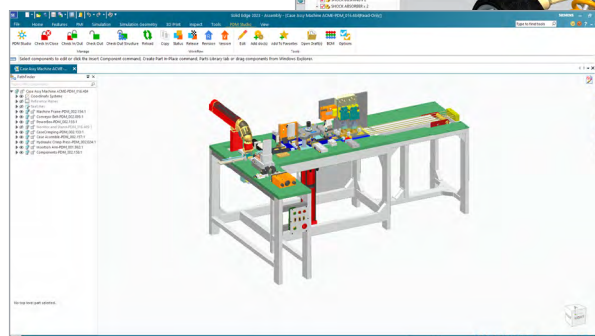
PDM Studio is designed for maximum interoperability with other applications. It supports, among others, established MCAD solutions such as Solid Edge, NX, SOLIDWORKS, AUTOCAD or Inventor. Product data from the ECAD solutions PC|Automation and Smap3D Electrical as well as from the pipe planning tool Smap3D Plant Design can also be managed.

The functionality of PDM Studio can be used directly from the other application. The CAD integrations are characterized by the fact that the inner structure of even complex file relationships is analyzed, captured and made available to the user by PDM Studio.

- NX
- Solid Edge
- SOLIDWORKS
- AUTOCAD
- Inventor
- Smap3D Plant Design
- Smap3D Electrical
- PC|Automation



PDM Studio with NX



PDM Studio with Solid Edge

Where-used list

Name	Status	Revision	Extension	Filename	Check Out	Check Out To
Insertion Arm		0		PDM_002020	CheckedIn	smitsch
05-ArmInsertionStage		0		05-ArmInser...	CheckedIn	smitsch
6647-4		0		Project_0011	CheckedIn	smitsch
Insertion Arm		0/0		PDM_009231	CheckedIn	smitsch
SE - CaseMachine		0		Project_0004	CheckedIn	smitsch
6647-4		0		Project_0011	CheckedIn	smitsch
Case Assy Machine		0		PDM_002181	CheckedIn	smitsch
SE - CaseMachine		0		Project_0004	CheckedIn	smitsch
Case Assy Machine		0/0		PDM_009234	CheckedIn	smitsch
Case Assy Machine		0/0		PDM_009233	CheckedIn	smitsch
Case Assy Machine		0/0		PDM_001914	CheckedIn	smitsch
Monitor and Stand		0		PDM_002194	CheckedIn	smitsch
Insertion Arm		0/0		PDM_001899	CheckedIn	smitsch

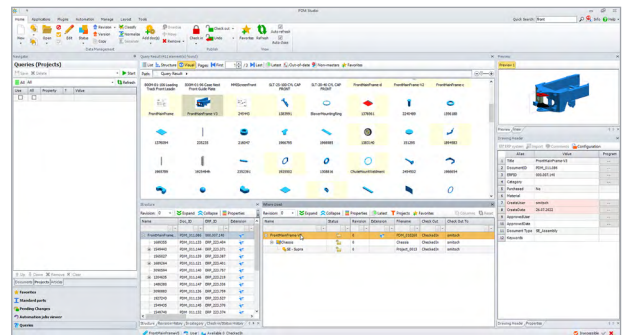
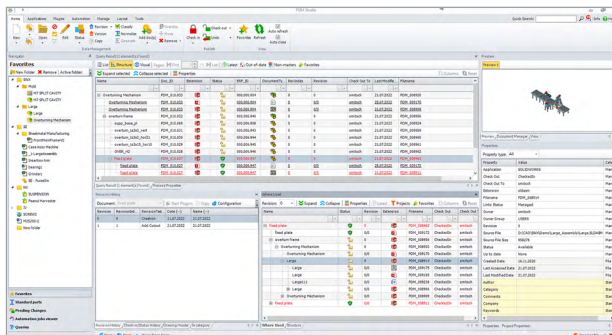
Find out whether and where a component is used. This allows you to estimate what effect a change will have and to decide whether you can continue to develop the component in a compatible fashion or whether the modified component should be further kept on file under a new number.

This feature has a great optimisation potential. Easily integrate the existing libraries or create the new ones with little effort. Use the classification tools of PDM Studio and quickly access standard parts via a list of characteristics.

Expert search via reader

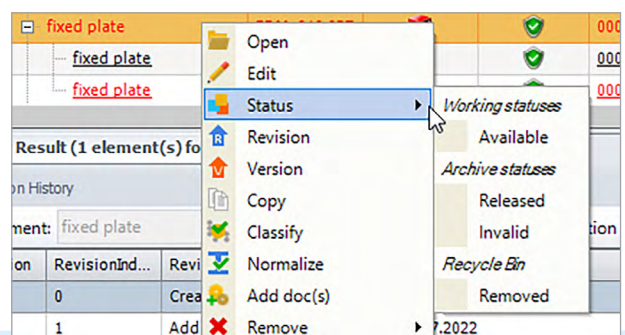
The PDM Studio search feature is a powerful tool that ensures that components are used repeatedly and the new components are not produced and administrated unnecessarily. User-friendly filter functions, including preview for visualisation, permit

a quick search and finding of parts using metadata, categories and classification. This allows the user to distinguish between purchased and manufactured parts, for example. Documents can also be added using the Drag & Drop feature.



Life cycle and release process

All types of documents (CAD, Office, images, etc.) can – even depending on the type – be divided into freely definable lifecycle phases such as ‘in processing’, ‘in review’ or ‘release’. Each document has its precisely defined status and is monitored throughout all lifecycle phases. PDM Studio also supports the user with a system-supported and secure release process. Access for specific users is controlled based on their document status. Plausibility checks ensure the quality of documents to be released.



Standard features

Query Result (8 element(s) found)

Name	Doc_ID	Extension	Status	ERP_ID	DocumentTy	RevIndex	Revision	Check Out To	Last
SE - Supra							0	smitsch	
PCab							0	smitsch	
Chassis							0	smitsch	
FrontMechanism							0	smitsch	
RearBody							0	smitsch	
Working							0	smitsch	
Supra2004	PDM_011.088			ERP_223.186		0	0/0	smitsch	26.0
Supra2004	PDM_011.088			ERP_223.186		0	0/0	smitsch	26.0
Supra2004S	PDM_011.084			000.007.129		0	0	smitsch	26.0
SE - CaseMachine							0	smitsch	
SE - Grinder							0	smitsch	
SWX - Conveyor							0	smitsch	
SWX - Moldtool							0	smitsch	
NXK - Suspension							0	smitsch	
NXK - Harvester							0	smitsch	
SE - Purzellin							0	smitsch	

Smart project management

Documents used in several projects often produce redundant data. PDM Studio prevents this by providing a project and folder structure that can be used for repeated storage of documents, even though this is the same document. This combines the filing structure learned by many users with the clarity of a document.

Project

Project properties

ERP ERP system Configuration

	Name	Value	Program
1	Project Title	SE - Supra	
2	Project Number	444433	
3	Project Manager	Jon Snow	
4	Department	Heating	
5	Remarks		

Version and revision history

PDM Studio documents all past document states. Earlier versions can be accessed at any time, including their life cycle phase and any existing comments. For example, it is possible to quickly and conveniently determine the condition in which a component was installed at a particular point in time. The mapping of comprehensible and consistent revision history is particularly important for professional quality management. PDM Studio provides wizards for this purpose and enables selective revision even within complex structures.

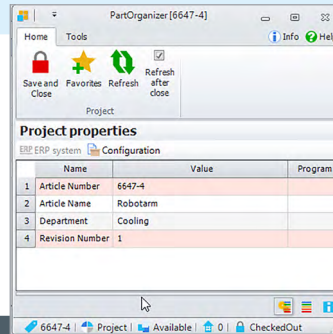
Revision History

Document: FRONT SIDE PLATE L Start Plugins Copy Configuration Last properties

Revision	RevisionIndex{...}	RevisionText{...}	Date {--}	Name {--}
0	0	Creation	22.07.2022	22.07.2022
1	1	Add cutout	22.07.2022	22.07.2022

Where Used Revision History

Name	Doc_ID	Extension	Status
6647-4			
Insertion Arm	PDM_001.992		
Insertion Arm	PDM_001.992		
Robot Specification	PDM_010.100		
4575-5			
FRONT HUB CARRIER L_1	PDM_008.986		
FrontHub Carrier	PDM_010.101		
Front Hub Carrier Spec	PDM_010.102		



Article / Item

With this function, all information belonging to an article/item can be grouped - whether CAD data, PDFs with specifications, Excel spreadsheets, images or documentation. The master data of the article/item (e.g. article/item number, description, in-house/external production) is also recorded, so that users have all relevant information quickly at hand. Of course, a synchronisation with the ERP system is also possible.

You can assign a document in PDM Studio to any number of articles/items: This is advantageous if, for example, you use one and the same manual for several articles/items. It avoids redundancies and significantly reduces the time required for updates. You can also assign an article/item status (available, blocked, invalid, ...) to categorize your articles/items and handle processes transparently.



Links

Each document may include additional information such as supplier specifications, manuals, images or emails. PDM Studio allows you to link related documents together. All relevant information can be viewed at a glance.

Query Result (1 element(s) found)

List Structure Visual Pages: First 1 / 1 Last Latest Out-of-date Non-masters Favorites

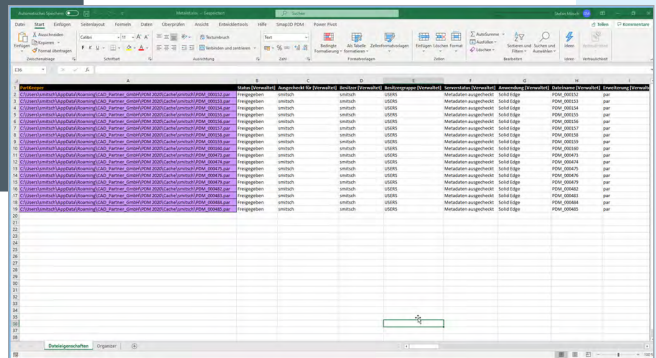
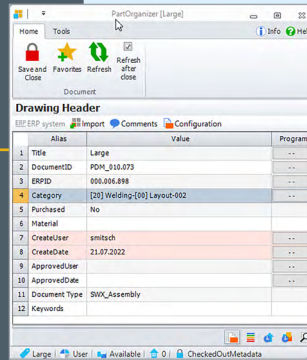
Expand selected Collapse selected Properties

Name	Doc_ID	Extension	Status	ERP_ID	DocumentTy...	RevInc
FrontMainFrame-V2	PDM_012.032			000.007.228		0
Electrical Schema	PDM_012.032			000.007.228		0
Change Request	PDM_012.032			000.007.228		0
3D Print Document	PDM_012.032			000.007.228		0
Drawing FrontMainFrame-V2	PDM_012.032			000.007.228		0
FrontMainFrame-V2	PDM_012.032			000.007.228		0
1204635	PDM_011.146			ERP_223.219		0
1486380	PDM_011.147			ERP_223.336		0
1549211	PDM_011.131			ERP_223.367		0
1549237	PDM_011.129			ERP_223.368		0
1549245	PDM_011.130			ERP_223.369		0

Standard features

Export/Import - Mass Data Processing (PartKeeper)

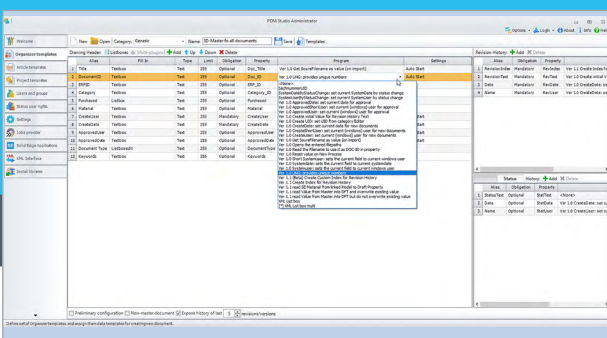
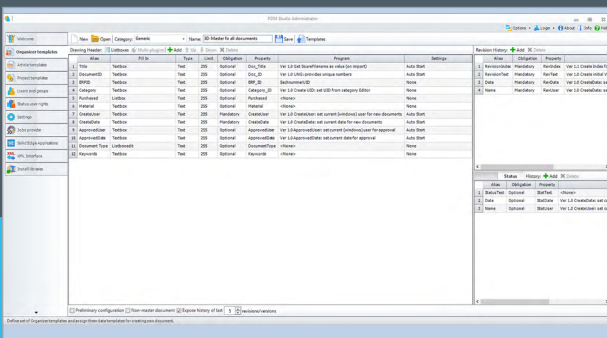
The so-called PartKeeper can be used to export filter results for certain documents to Excel. Their metadata can be conveniently edited and supplemented there. By re-importing the information, even bulk data is quickly and easily updated in PDM Studio via batch processing. PartKeeper is also available as a separate tool if mass data is to be optimised before it is imported into PDM Studio for the first time.



Rules

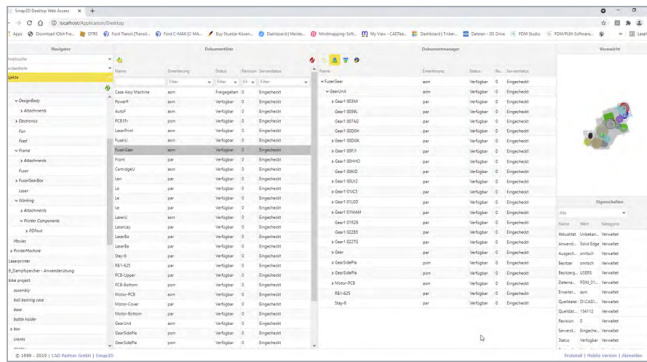
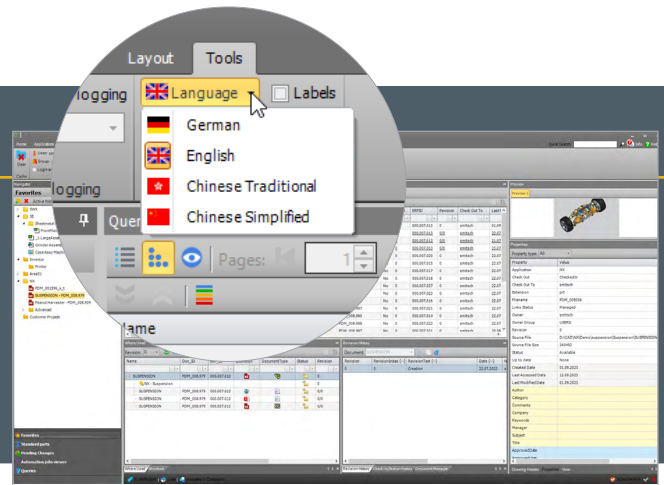
Drawing numbers or names can be assigned in PDM Studio according to definable rules. This ensures consistent and unambiguous nomenclatures. The requisite data and rules may consist of:

- Mandatory fields that require data input
- Data that is automatically generated by the system, e.g. the user who creates the document
- Permitted selection lists of predefined terms
- External programs such as data transfer to an ERP



Languages

PDM Studio is available in German, English, and Chinese. Additional languages can be easily added using translation tables. This means that PDM Studio can be quickly and easily adapted to local conditions and user acceptance increases considerably.



Web access

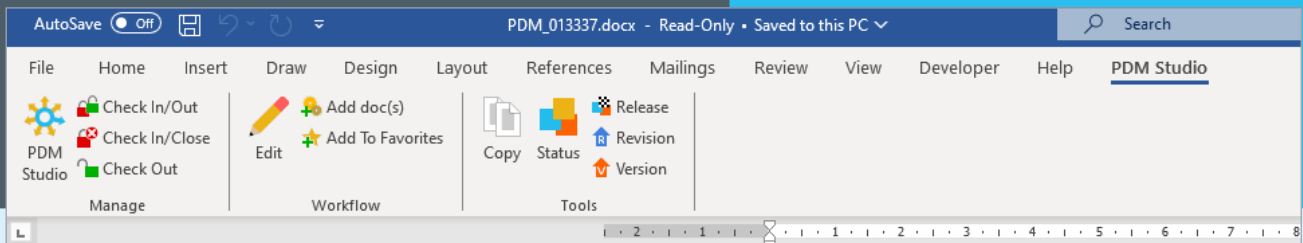
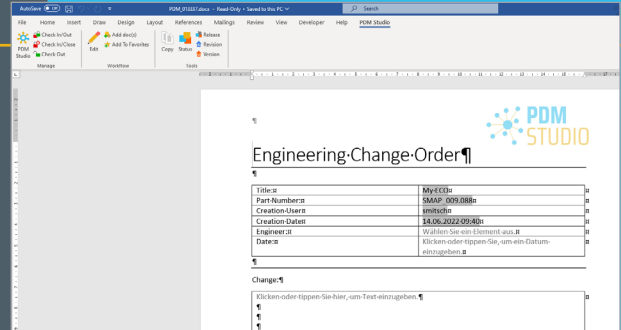
Web access is the fastest and easiest way to share PDM Studio data with others via an Internet browser, regardless of location. All search options across various parameters such as part number, file name, description, status, etc. are available. You get a structure and preview of the search results.

PDM Studio
has even
more to offer

Have we already sparked your interest with our numerous standard features? Then we will finally convince you with the available expansion modules.

Integration of Office file formats

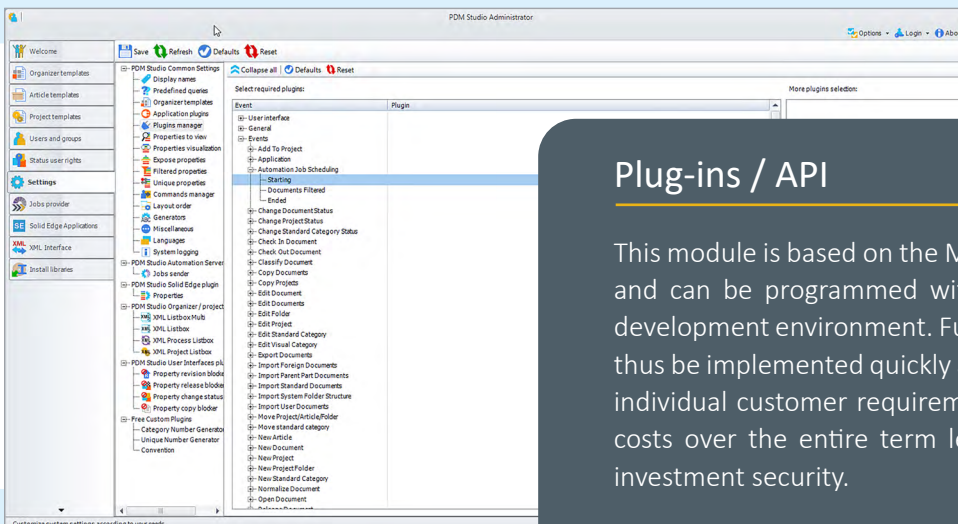
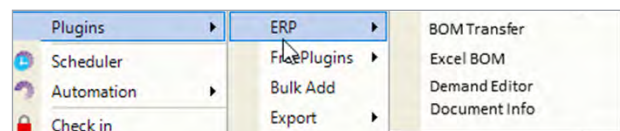
PDM Studio can manage not only CAD and CAM data, specifications, change requests, parts lists, etc., both centrally and in relation to each other. The key features and data of PDM Studio can also be integrated directly into the Edit panel of your Office applications such as Microsoft Word or Adobe PDF.



ERP interface

Common processes for all conventional ERP systems can be implemented thanks to the XML-based, flexible ERP interface. Parts and article master data are synchronised bi-directionally. Articles can be created automatically in the ERP. BOM data, including all metadata, is transferred from PDM Studio to ERP. This also enables an early demand assessment

of the so-called long-running products. PDM Studio also transfers event-driven CAD data as a drawing and 3D model in neutral format.



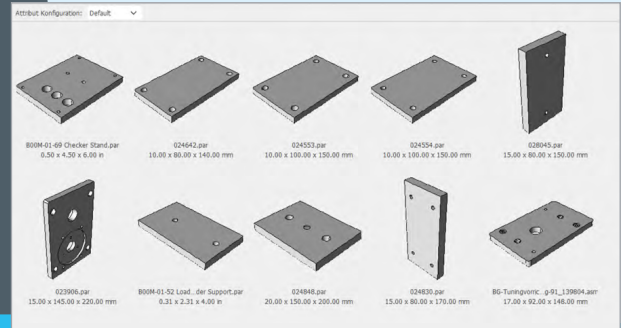
Plug-ins / API

This module is based on the Microsoft .Net standard and can be programmed with the „Visual Studio“ development environment. Functional upgrades can thus be implemented quickly and easily according to individual customer requirements. Low adjustment costs over the entire term lead to a high level of investment security.

Upgrade modules

Geometric search

Search for master data directly in PDM Studio using your geometric data. Find out whether this component already exists in the same or similar format and take advantage of the resulting benefits:



- Avoiding duplicates reduces administration costs and effort.
- Better use of the existing data increases productivity.
- Reduced component diversity reduces costs.
- Combining the same or similar parts in production or procurement improves the cost structure.

Open interfaces for process integration

Open and powerful interfaces are the basis for process integration throughout the entire company. The PDM Studio Open module permits the user to exchange information and data directly with applications or indirectly via standards such as SQL, XML, etc.

PDM Studio Open reduces manual effort in the exchange of information between the different systems of a company. At the same time, the quality of the data increases because errors are avoided during the exchange process.



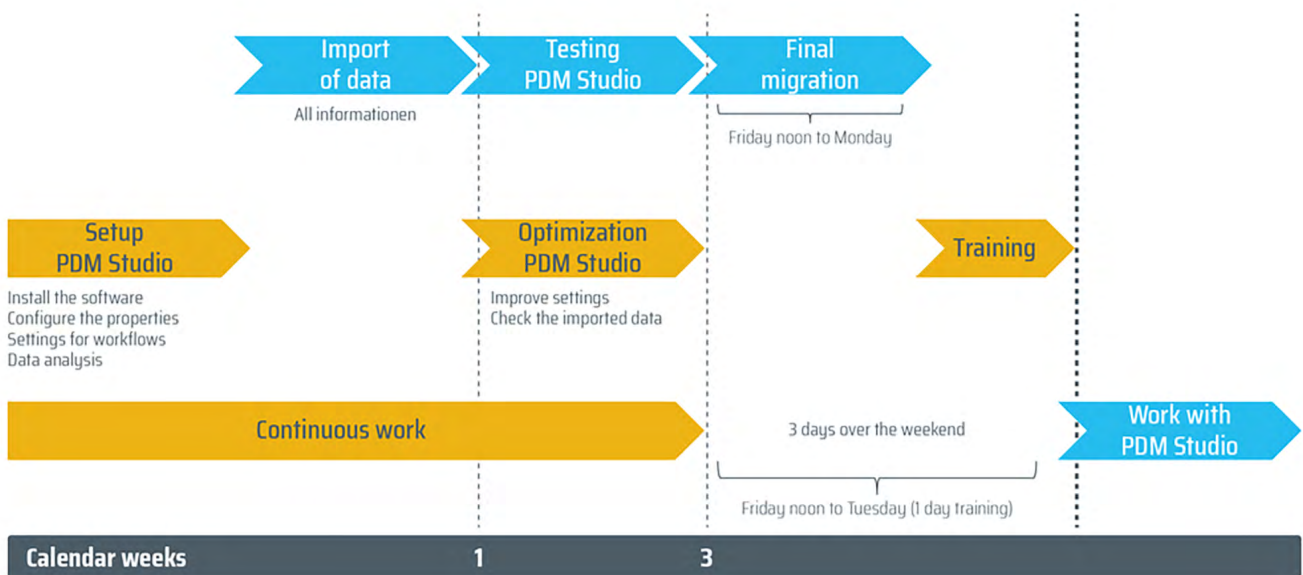
Implementation process

The smart way to introduce a PDM

Fast and easy

These two words are the essence of our concept and the guarantee that all employees in your company benefit from the advantages of PDM Studio right away. With our proven approach, PDM Studio

can be adapted to your requirements in a very short time. Subsequently, your inventory data will be transferred and the employees will be trained. Done! You can now start working with PDM Studio.



OUR COMMITMENTS:

There will be no interruption due to the implementation of PDM Studio.

The continuous work is guaranteed. Our flexible and efficient project management is tailored to your processes. Our goal is to carry out all work in the background or online. Last but not least, this keeps the implementation costs for PDM Studio within reasonable limits.

The administrative burden on your employees is minimal.

We require little information - based on the existing parts lists and title blocks - to customise your PDM Studio and go live immediately.

The transfer of your inventory data is fast and easy.

A critical and often lengthy step in the implementation of data management is the transfer of existing data. PDM Studio eliminates the need for time-consuming and tedious preparation and cleaning of the usually extensive inventory data prior to introduction. We transfer these 1:1 from the existing sources.

You can immediately use extensive search functions and conveniently edit mass data. You also benefit directly from automated processes and the extremely useful where-used list. You only revise the data you are working on, and thus optimize your database gradually, as needed. It doesn't get any more efficient than this!

References

PDM Studio is used by numerous companies

We are pleased to present selected references to you. We would be happy to introduce you to other reference customers in a personal meeting.



„With Solid Edge and PDM Studio, the designer is given a comprehensive tool to successfully implement the construction of customer-specific and standardized solutions.“

Andreas Kraus | Manager Operations
Evosys Laser GmbH

„For us, consistency was a decisive factor in becoming faster, more flexible and at the same time more precise than our business requires.“

Daniel Fiebig | Director IT-Management
Drexler Automotive GmbH



„Thanks to the automation function via the Automation Client, PDM Studio takes over manual standard processes and relieves employees of tedious routine tasks.“

Jens Möckel | Managing Director
Josef L. Rameckers Maschinenfabrik GmbH & Co. KG



„We are convinced that with PDM Studio we will achieve structured data storage and a more efficient way of working. We want to use the saved resources for new product developments.“

Thomas Berg | Managing Director
LaVision GmbH



Support and maintenance Training, Updates, Expert hotline

PDM Studio at a glance

Get to know PDM Studio and learn more about selected features.

We support you in the implementation and start-up of PDM Studio. Our solution architects and technical consultants ensure a structured and smooth process, train your administrators, key users and the users of the various departments individually in the handling of PDM Studio and are available with help and advice, so that our solution can achieve the

desired effect in the company as quickly as possible. Of course, we are continuously developing PDM Studio and adapting it to new requirements. Optimizations and new functions not only make the software future-proof, but also enable new application possibilities from which our customers benefit in the long term.

Stay up to date with PDM Studio. Subscribe to our newsletter, participate in our webinars or follow us on social media:

NEWSLETTER:
www.pdm-studio.tech/en/newsletter

WEBINARS:
www.pdm-studio.tech/en/webinars

SOCIAL MEDIA:
www.linkedin.com/company/cad-partner & YouTube

Support for our maintenance customers

We offer our customers professional support as part of an active maintenance contract and access to regular updates of PDM Studio

In our password-protected Support Center you can:

- simply capture your hotline inquiries,
- upload associated images and data,
- see the processing status of your request(s) and
- get an overview of your previous inquiries.

Alternatively, you can contact our hotline by

Phone: +49 9404 9639-21

E-Mail: hotline@cadpartner.de

Please note:

If you obtain PDM Studio from a reseller, please contact their support directly.

CAD Partner GmbH

Am Marktplatz 7
93152 Nittendorf
Germany

Phone: +49 9404 9639 21
Fax: +49 9404 5209

info@CADpartner.de
www.CADpartner.de/en



PDM Studio Newsletter

Exciting informations about
product data management

Would you like to receive targeted information
from us on a regular basis? Nothing easier than
that. Simply subscribe to our free PDM Studio
Newsletter.

www.pdm-studio.tech/en/newsletter

